

Gensler
ANNUAL
REPORT
2020

A TIME OF TRANSFORMATION



IN A YEAR OF
TRANSFORMATION,
WE ARE EMBRACING
OUR PURPOSE AS
ONE COMMUNITY.

Meeting the Moment Together With Determined Optimism

Despite the unprecedented challenges of a global pandemic, we have embraced change and celebrated our unique culture and perspective with determined optimism. This optimism is confidence-inspiring and reminds us that even during the most difficult, uncertain, and challenging times lies the spark for positive change. Our firm has always emerged from challenging times more resilient and stronger together with tremendous growth and optimism.

It is taking everyone's commitment, hard work, perseverance, and leadership to get through this unprecedented period in our firm's history. Our integrated and unique one-firm firm culture combined with our global footprint and our practice area expertise enable us to quickly make big, bold decisions. In March, we transitioned all our people out of our 50 global offices in 16 countries to work from home. Our prior investments in collaborative technologies allowed us to quickly change direction with our global and local teams and deliver work to our clients seamlessly.

We are very proud that we acted quickly and decisively while other firms hesitated. Our actions helped keep our people and their families protected and out of harm's way. Constant communication and transparency was the key to ensuring everyone was informed and aware of the impending global threat.

We thank you for your dedication, courage, and professionalism as we continue to decisively move in the direction that reflects our vision for cities and the human experience. Through our agility, collaborative culture, design excellence, and unmatched thought leadership, we have demonstrated, unequivocally, our strength as a global design force.

The Power of Design

By leveraging the power of design, we will continue to address our clients' needs in these challenging times. The global health crisis has introduced new demands and our clients are seeking out new innovative solutions. To meet this moment, we doubled down on our investment in research to harness new ideas that would respond to this moment in time and its impact on the future. Through ongoing interactive thought leadership, webinars, virtual roundtable discussions, and online design charrettes joined by clients from around the globe, we are helping our clients come back stronger from this pandemic.

Designing Places for Diversity

This year, the world witnessed the inexcusable murder of George Floyd and many others through senseless and shameful acts of violence. The reality of systemic racism must be acknowledged and addressed. We are committed to creating a just and equitable future, and that starts with reimagining the future of our cities for social justice, equity, and inclusion. When multiple stakeholders have a seat at the table in the planning of our communities, we collaboratively create the places that strengthen neighborhood ties, improve local economies, and enhance health and well-being. Working with our clients, our Strategies to Fight Racism will guide us in creating communities where everyone enjoys the same access to the opportunities of what our cities have to offer.

A Time of Transformation

Our purpose has never been so clear. Together, we have the most extraordinary opportunity to have a profound impact on the course of history and shape the future of cities and the world. With determined optimism, we can tackle the toughest challenges facing cities and seek out positive change—change that Reimagines the Future of Cities and takes on global wellness, climate change, social justice, the future of mobility, and housing and homelessness.

When it comes to life's challenges, we often stand at a crossroads. We are at one of those crossroads now, both in life and in the history and future of our firm. We thrive in times of radical change. We know everyone is making personal sacrifices to lead in these challenging times.

With renewed purpose and momentum, we commit ourselves to reshaping our post-pandemic cities, and creating a future that is healthy, fosters equity, and is centered on people and experience. We are facing challenges we've never faced in human history, but we know that with your tremendous leadership and an unwavering commitment to the power of design, we can create a better world for everyone.



Diane

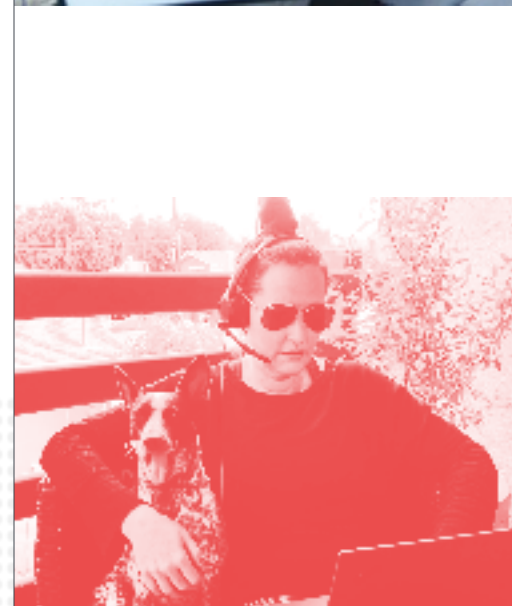
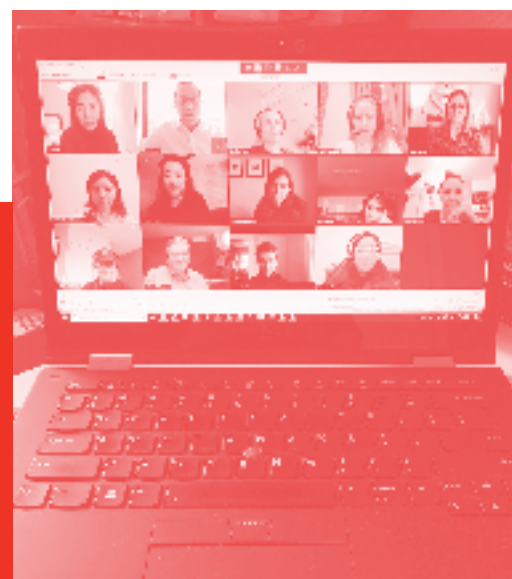
Diane Hoskins
FAIA, IIDA
Co-CEO

Andy

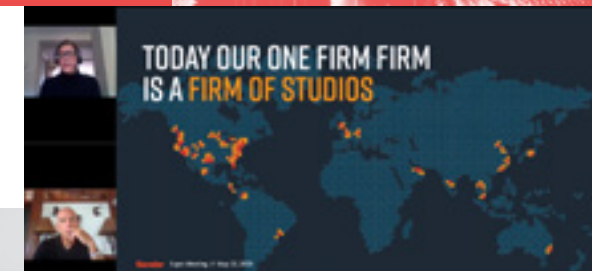
Andy Cohen
FAIA
Co-CEO

WE CAME TOGETHER AS ONE GLOBAL COMMUNITY AMID A GLOBAL HEALTH CRISIS.

In March 2020, we put the well-being of our people first and transitioned our global offices to work from home. In a matter of days, we migrated our projects to the cloud to ensure seamless delivery for our clients. Our response to the health crisis came faster than any other firm—and ahead of government-mandated orders.



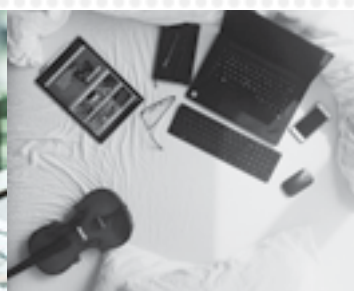
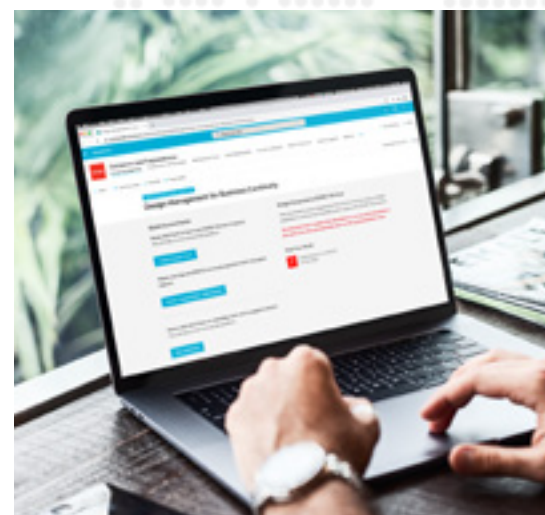
WE ARE TRULY ALL IN THIS TOGETHER.



OUR CULTURE HAS NEVER BEEN STRONGER.

8,000+

WE MOVED OVER 8,000 PROJECTS TO THE CLOUD FOR SEAMLESS ACCESS FOR OUR OFFICES ACROSS THE GLOBE.



THE TIMELINESS OF OUR DECISIONS AND OUR HARD WORK SAVED LIVES.

Gensler's one-firm firm culture prioritizes coming together to exchange ideas, build trust, and celebrate collaboration. We know now that these values translate to the virtual world too. We're connecting and collaborating seamlessly during this critical time through a robust array of virtual meetings at every level of the firm.



OUR PURPOSE HAS NEVER BEEN SO CLEAR.

For several years, we have been focused on the critical role of the world's cities and our primary goal to design for people living, working, and playing in urban environments. Shaping the future of cities has been our call to action and the centerpiece of our purpose as designers. That purpose is even more true now. As the coronavirus pandemic, social unrest, and climate change transform the world, we are reimagining the future of cities to create more inclusive and resilient spaces that support the health and well-being of everyone.

**NOW MORE THAN EVER, WE HAVE THE
OPPORTUNITY TO REIMAGINE THE
FUTURE OF CITIES.**

Columbia College Chicago's student center took the conventional idea of an atrium and turned it inside-out, making the active student spaces more visible and enhancing connections with the surrounding campus. The building is a physical expression of the college as a cultural incubator and innovation hub.

Columbia College Student Center, Chicago

THE PANDEMIC HAS PROVOKED NEW THINKING ABOUT GLOBAL WELLNESS

—

As a purpose-driven global community, we have been able to think deeply about the pandemic and what recovery looks like. The key theme in our thought leadership: We must have a new understanding of global wellness.

WE CREATED POST-PANDEMIC STRATEGIES

Through our "Back to" series and thought leadership, we are providing our clients with short-term solutions and advice for a reimagined future.

RETURN STRATEGIES P.8

ARTICLES AND BLOGS P.9

COVID-19 IS RESHAPING THE WORKPLACE

To understand how working from home during COVID-19 has affected people's perception of work and the workplace, we surveyed 2,300+ U.S. workers across 10 industries.

WORK FROM HOME SURVEYS P.10

CITY PULSE SURVEY 2020 P.12

OUR CITY PULSE SURVEYS WILL HELP REDEFINE CITIES

We surveyed quarantined residents in New York, San Francisco, London, and Singapore to better understand the pandemic's influence on city life.

We're helping our clients visualize return strategies and design solutions for a new, post-pandemic reality.

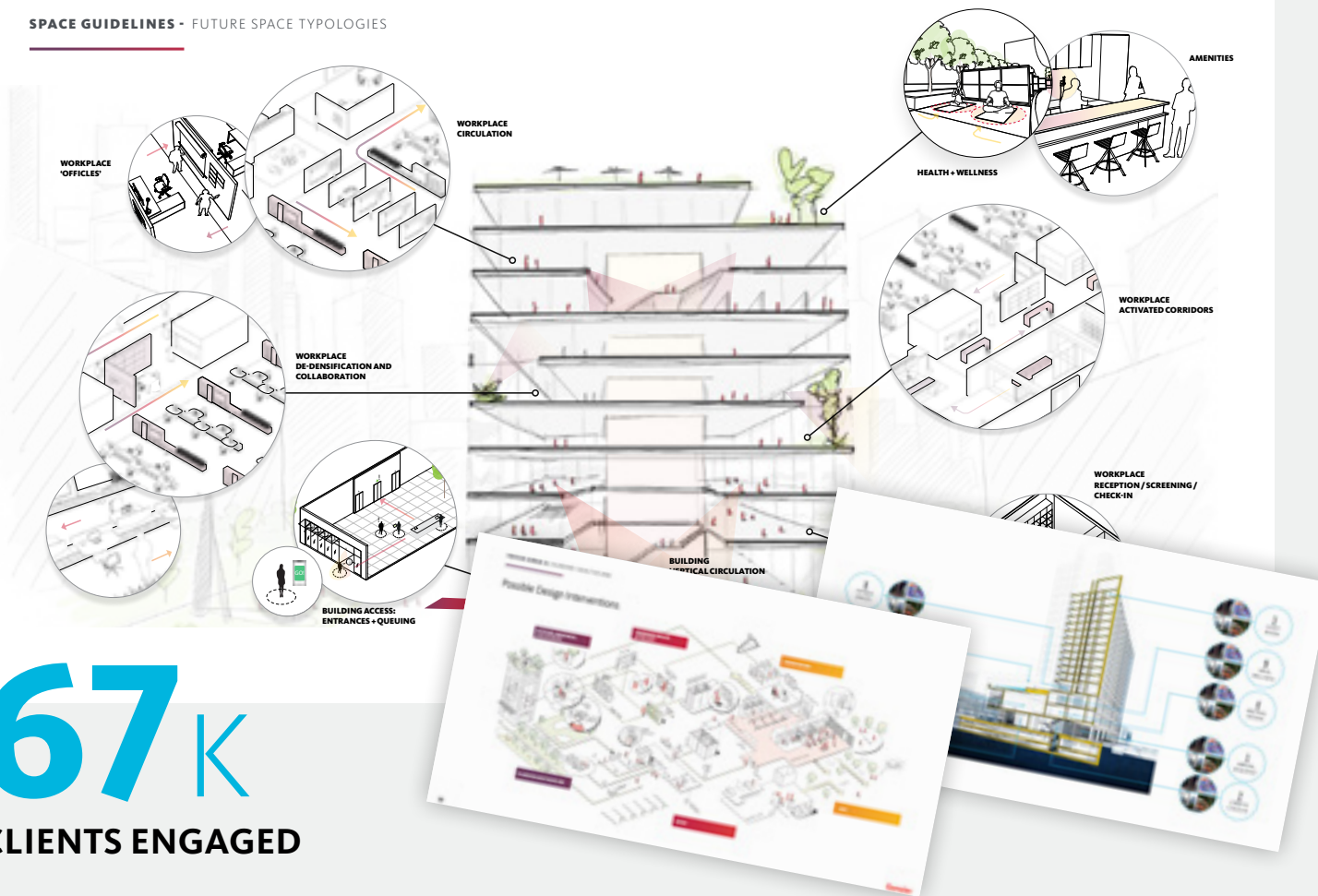
Bartlit Beck Herman Palenchar & Scott LLP, Chicago

RETURN STRATEGIES AND THOUGHT LEADERSHIP

Through our “Back to” series and thought leadership, we are providing our clients with solutions for immediate challenges, and advice to help them adapt and prepare for a reimagined future. We are incubating new ideas and seeking answers to the important questions about the role design can play now and in the months to come. Through our blogs, weekly client emails from our Co-CEOs, and our Dialogue Now weekly newsletter, we provide real-time strategies and expertise to help our clients drive their business forward.

By delivering post-pandemic ideas and strategies to our clients, we’ve been able to help them plan for the near term and reimagine the future.

SPACE GUIDELINES - FUTURE SPACE TYPOLOGIES



67^K
CLIENTS ENGAGED

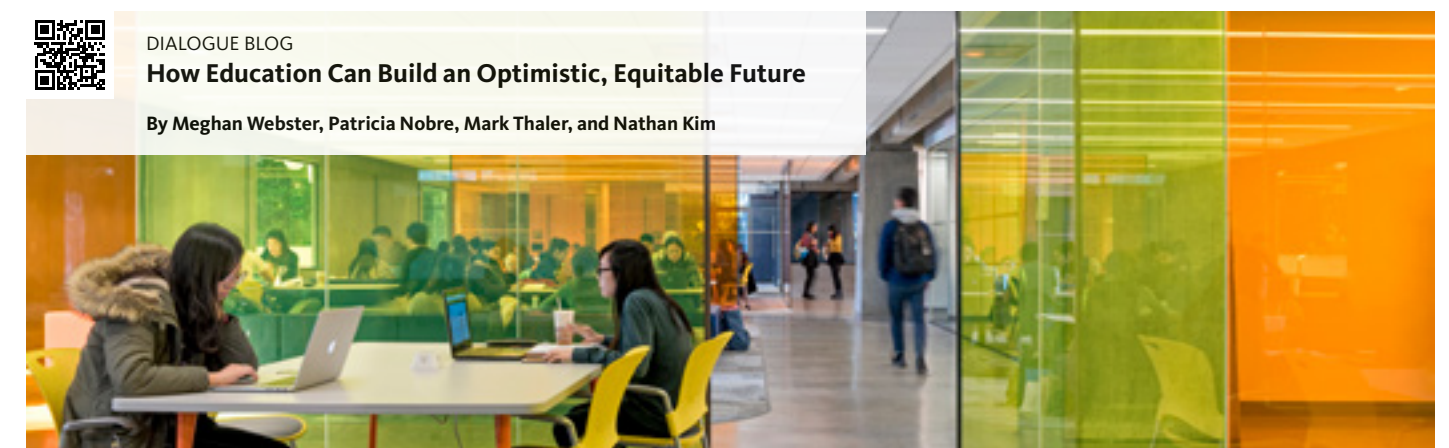
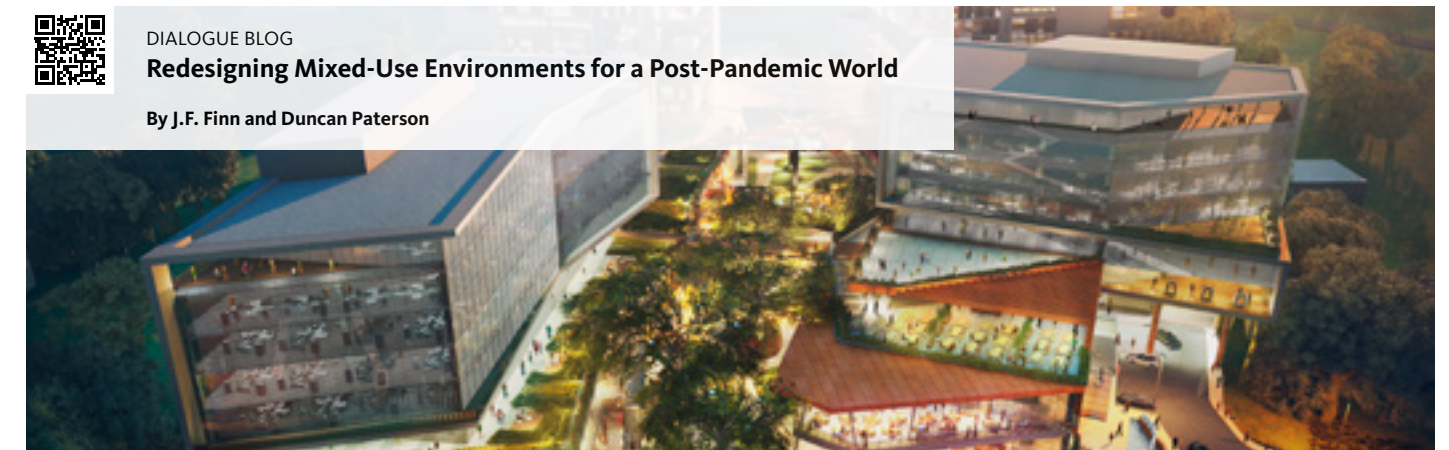


RETURN STRATEGIES AND DESIGN SOLUTIONS

From addressing questions of how to safely return to the office, retail stores, or airports, to how healthcare is transforming, the “Back to” series aims to help our clients address short-term needs and long-term challenges. To help bring our “Back to” series to life, we hosted industry leader roundtable discussions with clients across industries to strategize about the post-COVID marketplace and help guide us through these unprecedented times.

REIMAGINING THE FUTURE

To understand and plan for the complex challenges of a global health crisis, we are publishing on the Dialogue Blog to provide clients with blogs, articles, and thought leadership that detail short-term solutions and outline advice for what recovery looks like.



WORK FROM HOME
SURVEY 2020

During the COVID-19 crisis, hundreds of millions of workers across the globe left the office to work from home. In response, the Gensler Research Institute conducted the U.S. Work From Home Survey 2020 in April, an online, anonymous survey of 2,300+ U.S. workers across 10 different industries. While many of the effects of COVID-19 on the workplace are still unfolding, some of the data is clear: Most workers want to come back to the office, but they expect crucial changes.

Data from our research study shows that most people want to return to the office, but they also expect changes.



RoundPoint Mortgage Headquarters, Fort Mill, S.C.

70%

70% OF PEOPLE WANT TO WORK IN THE OFFICE THE MAJORITY OF THEIR WEEK

30%

30% OF PEOPLE WANT A FLEXIBLE WORK ARRANGEMENT

Source: Gensler Work From Home Survey 2020: Briefing #1

Our insights show why people want to return, and we break down the results by industry.

DO YOU PREFER TO GO BACK TO THE OFFICE OR CONTINUE TO WORK FROM HOME?

NO DAYS AT HOME	1 OR 2 DAYS AT HOME	3 OR 4 DAYS AT HOME	5 DAYS AT HOME
44%	26%	18%	12%
70% OF PEOPLE WANT TO WORK IN THE OFFICE THE MAJORITY OF THEIR WEEK			30% OF PEOPLE WANT A FLEXIBLE WORK ARRANGEMENT

They want more space (less density) for social distancing and an assigned workspace. These measures can also improve the performance of the workplace, addressing issues of noise and distraction that were already diminishing effectiveness.

Their spaces could be used for other functions when not in use as workspaces, given their intermittent need. Ample social distancing space, and recommended cleaning protocols, will still be crucial.

WORKERS COME INTO THE OFFICE FOR THE PEOPLE

1	Scheduled meetings with colleagues	54%
2	Socializing with colleagues	54%
3	Impromptu face-to-face time	54%
4	To be part of the community	45%
5	Access to technology	44%
6	To focus on my work	40%
7	Scheduled meetings with clients	40%
8	Professional development/coaching	33%
9	Access to amenities	29%

MILLENNIAL AND GEN Z WORKERS ARE FINDING IT HARDER TO MAINTAIN WORK-LIFE BALANCE WHILE AT HOME

	HARDER AT HOME	SAME	EASIER AT HOME
Avoiding Distractions	50% Gen Z & Millennial	22%	28%
	41% Gen X	24%	35%
	33% Baby Boomers	26%	41%
Maintaining Work-Life Balance	37%	21%	42%
	33%	23%	44%
	25%	31%	44%

HOW THE DESIRE TO WORK FROM HOME VARIES BY INDUSTRY

I want to continue working from home regularly for...

	NO DAYS AT HOME	1 OR 2 DAYS	3 OR 4 DAYS	5 DAYS (FULL TIME AT HOME)
Technology	36%	28%	19%	17%
Management/Advisory	36%	30%	19%	15%
Media	39%	31%	15%	15%
Sciences	42%	26%	21%	11%
Finance	44%	24%	16%	16%
Energy	44%	26%	20%	10%
Consumer Goods	46%	27%	20%	7%
Government/Defense	47%	24%	16%	13%
Legal	50%	26%	14%	10%
Not-for-Profit	50%	23%	19%	7%

Source: Gensler Work From Home Survey 2020: Briefing #1

CITY PULSE SURVEY 2020

We surveyed residents in New York, San Francisco, London, and Singapore in May 2020 (while they were under lockdown due to COVID-19). The goal was to understand what people in these metropolitan areas are most concerned about, and what they're looking for next. Among the major findings: COVID-19 is driving many urban residents to consider moving out of their cities—but economics, not health, appear to be the driving concern. By understanding what those most likely to leave are looking for, cities can explore options and amenities to keep their residents engaged in urban life.

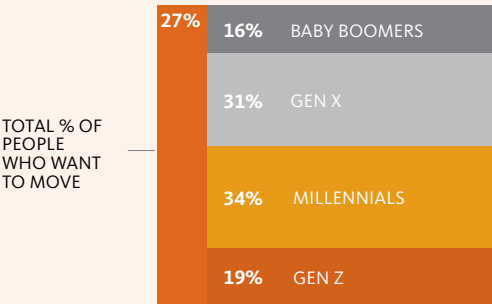
People are rethinking urban life in light of the pandemic. Many are considering moving away from cities.

MILLENNIALS ARE THE MOST LIKELY TO CONSIDER MOVING.

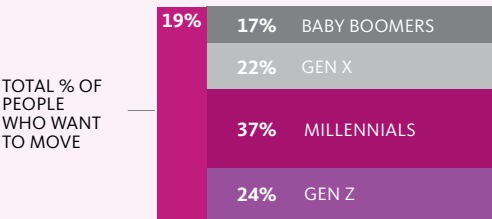
Percentage breakdown by generation of those looking to move out of each city.



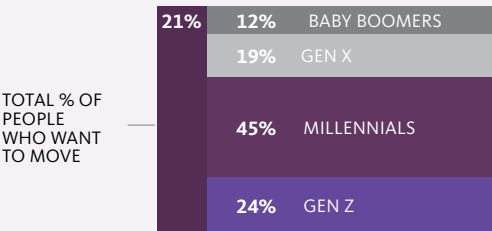
NEW YORK



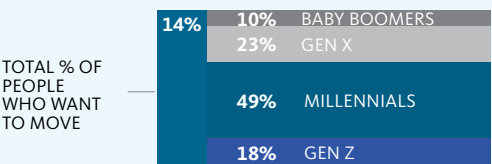
SAN FRANCISCO



LONDON



SINGAPORE

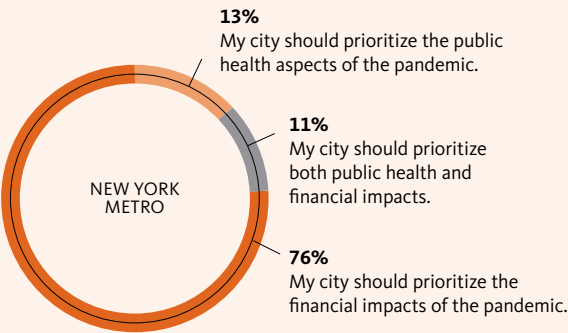


1.5x

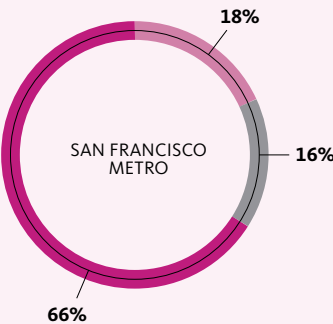
PEOPLE LIVING WITH YOUNG CHILDREN ARE AT LEAST 1.5X MORE LIKELY TO WANT TO MOVE THAN PEOPLE WHO DON'T LIVE WITH CHILDREN.

PEOPLE LIKELY TO MOVE ARE 3X MORE LIKELY TO THINK THEIR CITY SHOULD PRIORITIZE FINANCIAL CONCERNS OVER PUBLIC HEALTH CONCERNS.

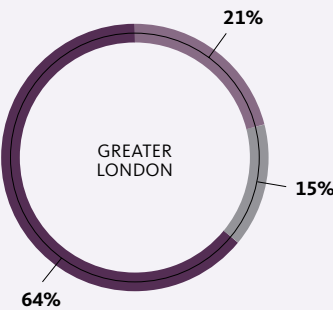
Percentage who believe their city should prioritize each item for those who are likely to move.



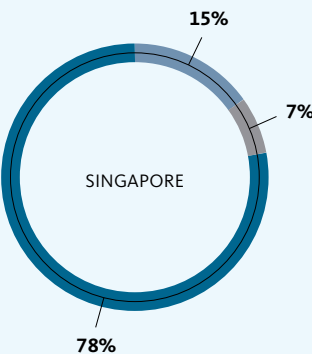
1. Safety	58%
2. Affordability	56%
3. Convenience	45%
4. Proximity to family/friends	40%
5. Access to healthcare	36%
6. Private outdoor space	33%



1. Affordability	61%
2. Safety	58%
3. Convenience	50%
4. Proximity to family/friends	37%
5. Access to healthcare	37%
6. Job opportunities	34%



1. Affordability	53%
2. Safety	49%
3. Convenience	46%
4. Private outdoor space	45%
5. Access to public open spaces	39%
6. Access to healthcare	38%



1. Affordability	76%
2. Convenience	74%
3. Safety	66%
4. Access to healthcare	53%
5. Proximity to family/friends	42%
6. Lower density	41%

THE GLOBAL HEALTH CRISIS IS A WAKE-UP CALL FOR CLIMATE ACTION

—
The novel coronavirus has shown how the natural world can destroy the global economy virtually overnight. Super storms, rising seas, heat waves, and other effects of climate change will cause the next world crisis. We must act.

WE ARE DOUBLING DOWN ON OUR COMMITMENT TO CLIMATE ACTION

Gensler's Cities Climate Challenge (GC3) challenges the entire design industry to eliminate all greenhouse gases associated with the built environment.

GENSLE'S CITIES CLIMATE CHALLENGE (GC3) P.16

WE MEASURED THE IMPACT OF OUR OWN PORTFOLIO

Our Impact by Design report assesses the performance and resilience of the firm's portfolio.

IMPACT BY DESIGN P.17

AIA COTE TOP TEN AWARDS P.18

OUR WORK IS BEING RECOGNIZED

We are the only firm to have won three Top Ten Awards from the AIA Committee on the Environment.

Reversing climate change requires us to rethink how we build. This concept uses mass-timber to cut its carbon footprint by 20%.

Proto-Model X (PMX), Toronto

GENSLEER CITIES CLIMATE CHALLENGE (GC3)

In September 2019, Co-CEO Diane Hoskins joined a panel on “Advancing Buildings and Sustainable Urban Infrastructure” at the U.N. Climate Action Summit 2019. There, she announced the Gensler Cities Climate Challenge (GC3), which challenges the architecture and design industry to eliminate all greenhouse gases associated with the built environment.

At the U.N. Climate Action Summit, we challenged the industry to reach net zero.

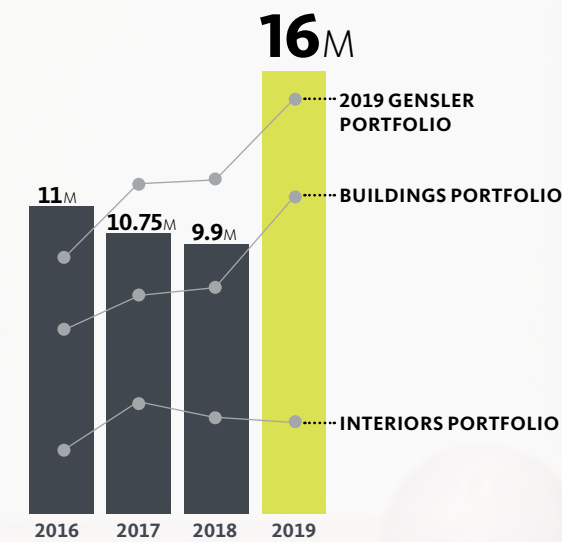


1.9M
THE ENERGY SAVINGS OF OUR 2019 BUILDINGS PORTFOLIO IS EQUIVALENT TO POWERING 1.9 MILLION HOMES FOR A YEAR.

Source: Gensler Impact by Design 2020

How can we help cities adapt to the challenges and opportunities presented by sea level rise? We partnered with local community and industry stakeholders in Miami to do research and develop ideas for buildings and infrastructure that can address rising water levels.

Coastal Resilience Research Phase 2, Miami



Gensler's carbon savings (buildings) per year

30M tons

OUR 2019 PORTFOLIO IS DESIGNED TO SAVE OVER 16 MILLION METRIC TONS OF CO2 EMISSIONS. OUR GOAL IS TO GET TO 30 MILLION.

Source: Gensler Impact by Design 2020

1.5B sq ft.

IN 2019 ALONE, GENSLEER PROFESSIONALS WORKED ON MORE THAN 7,000 PROJECTS REPRESENTING OVER 1.5 BILLION SQUARE FEET OF SPACE.

Source: Gensler Impact by Design 2020

IMPACT BY DESIGN 2020

In April 2020, we released Impact by Design, our annual report that assesses the performance and resilience of our portfolio. Taken together, our 2019 work is set to avoid 16.4 million metric tons of CO2 from being emitted into the atmosphere compared to average building energy usage—the equivalent of the power needed for 1.9 million homes for a year. That represents a significant impact, but we know it's not enough. Our goal is to reduce the carbon impact of our portfolio until we achieve carbon neutrality.

Within a decade, we will eliminate all net emissions associated with our work.

AIA COTE TOP TEN AWARDS

Recognizing our commitment to resilience in the built environment, Gensler is the first firm to win three Top Ten Awards in a single year from the AIA Committee on the Environment (COTE). The awards, considered the highest honor for sustainable design excellence, celebrate projects that meet the AIA COTE's rigorous criteria for social, economic, and ecological value. The winning Gensler-designed projects include the Ford Foundation Center for Social Justice, Etsy Headquarters, and UPCycle.

We are the only firm to win three “Top Ten Awards” in a single year from the AIA Committee on the Environment.

To achieve the path toward healthy, resilient cities, it's imperative that we develop strategies to improve the performance of existing buildings. 95% of this warehouse in Austin was reused and repositioned into creative office space.

UPCycle, Austin



GLOBAL WELLNESS MUST INCLUDE SOCIAL JUSTICE, EQUITY, AND INCLUSION

—
In response to the killing of George Floyd and other Black Americans, we have taken action that supports equity, inclusivity, and social justice in our cities, and creates opportunities for the Black community.



WE ARE COMMITTED TO INCLUDING MORE DIVERSE VOICES

Gensler's Global Race and Diversity Committee will help guide the firm's efforts to have a more impactful role on issues of equity, diversity, and inclusion.

GLOBAL RACE AND DIVERSITY COMMITTEE P.22

5 STRATEGIES TO FIGHT RACISM P.23

WE ARE TAKING ACTION TO ADDRESS SYSTEMIC RACISM

Our five-part Strategy Against Racism outlines key strategies to address systemic racism and our commitment to making positive, lasting change.

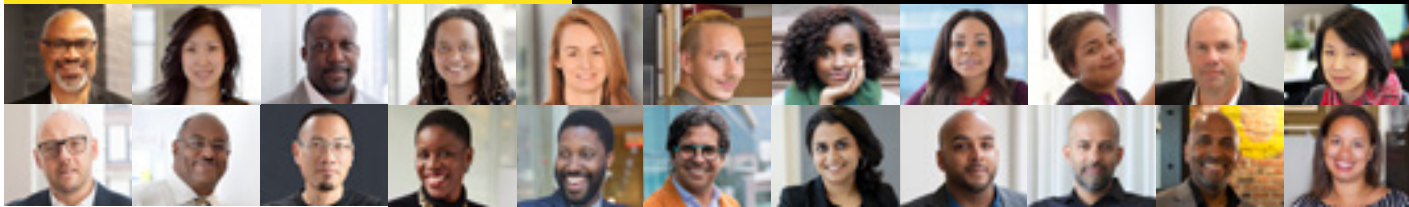
Designing for equity and inclusion starts by empowering young people to affect change in their communities.

Project Pipeline Summer Camp - I-NOMA, Chicago

GLOBAL RACE AND DIVERSITY COMMITTEE

Gensler's Global Race and Diversity Committee (GRDC), comprised of 22 leaders from every region in the world, will help guide the firm's efforts to have a more impactful role on issues of equity, diversity, and inclusion. The GRDC will oversee the five areas of the firm's Strategies to Fight Racism, as well as specific initiatives. This cohort will connect with our Regional Race and Diversity Committees to amplify our collective impact and ensure a sustained and lasting impact on our firm and our industry.

We've identified a team to guide our firm on equity, diversity, and inclusion.



ABOVE, IN ALPHABETICAL ORDER FROM TOP LEFT: **Douglass Alligood**, New York; **Jean Anderson**, New York; **Andre Brumfield**, Chicago; **Lisa Cholmondeley**, San Francisco; **Susana Covarrubias**, Seattle; **Chris Crawford**, London; **Imani Day**, Detroit; **Sarah Ekundayo**, London; **Nambi Gardner**, Los Angeles; **Francisco Gonzalez**, Washington D.C.; **Cathy Gu**, Shanghai; **Todd Heiser**, Chicago; **Larry Johnson**, Houston; **Hao Ko**, San Francisco; **Simisola Marinho**, Washington D.C.; **Vaki Mawema**, Baltimore; **Edgar Mora**, Costa Rica; **Nayan Parekh**, Singapore; **Jason Pugh**, Chicago; **Manan Shah**, Oakland; **Roger Smith**, Morristown, NJ; **Allison Tomlinson**, FW-New York



Equitable cities are also accessible cities. As designers, we must think about public transportation, affordable housing, and community representation. This transformational development will challenge the conventional mixed-use approach and create a new gateway to downtown that is inclusive, welcoming, and equitably prosperous.

Infill on the Cut, Detroit

5 STRATEGIES TO FIGHT RACISM

1.

We will increase racial diversity within Gensler by recruiting and hiring more Black professionals and supporting the Black professionals in our firm to achieve and exceed their full potential.



2.

We will pursue equitable design solutions in our cities and communities to create positive experiences for Black communities.



3.

We will create education opportunities for Black students by expanding our scholarship program and mentoring middle and high schoolers in our communities.



4.

We will create job opportunities in the architecture and design industry for Black professionals and serve as an active partner with the National Organization of Minority Architects (NOMA) and the ACE Mentorship Program.



5.

We will partner with our clients on diversity and inclusion initiatives in order to integrate and amplify efforts across our networks.



DESIGN HAS A UNIQUE AND PROFOUND ROLE IN MAKING A POSITIVE DIFFERENCE IN THE WORLD

—

How we design needs to change to match our new challenges. Global wellness, climate change, and racism can be solved with new tools, fresh insights, and innovative thinking.

WE DESIGN WITH DIGITAL SERVICES AND DATA INSIGHTS

To succeed amid disruption, organizations that harness data-driven insights and new digital technologies will have a significant advantage.

INTELLIGENT PLACES P.26

GRAPH™ P.26

inFORM ECOSYSTEM AND
gblox P.27

DIGITAL EXPERIENCE
DESIGN (DXD) P.28

WE'RE FINDING NEW WAYS TO COLLABORATE

In May, we kicked off a month-long Global Design Charrette to envision what a post-pandemic reality might look like.

2020 GENSLER
GLOBAL DESIGN
CHARRETTE P.33

THE HOMEWORK
SERIES P.30

DESIGN THINKING SOLVES NEW CHALLENGES

The firm launched the *Homework* series, a broad range of ideas and design from around our global design teams capturing the firm's spirit, as expressed through our design work.

We can use data to understand human behavior so we can design both elegant and useful spaces.

One Embarcadero Center, San Francisco

INTELLIGENT PLACES AND GRAPH™

To succeed amid disruption, our clients are pushing us to deliver data-driven insights that evolve with change to improve design, planning, and performance. We have responded by developing a specialized practice focused on helping clients get more out of their data, and delivering a best-in-class approach to spatial analytics for design.

We are using data and machine learning to build valuable connections between human behavior and the design of space.

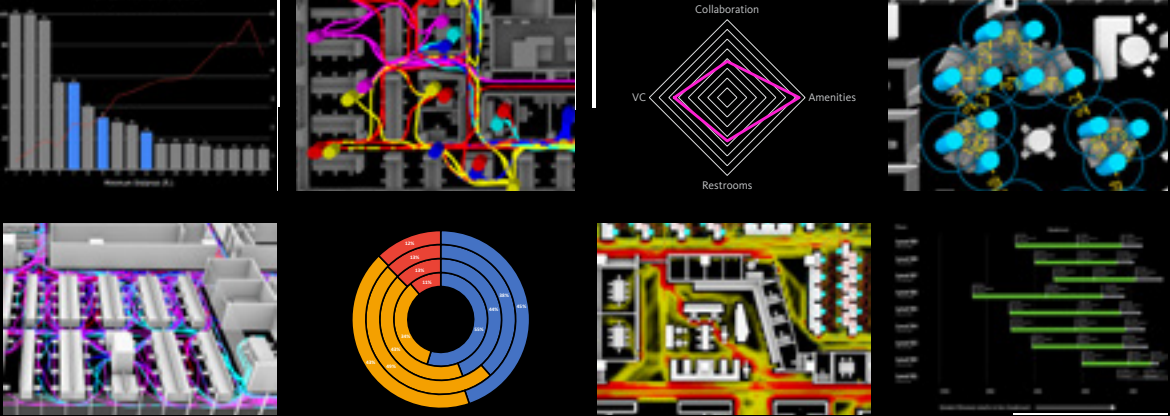
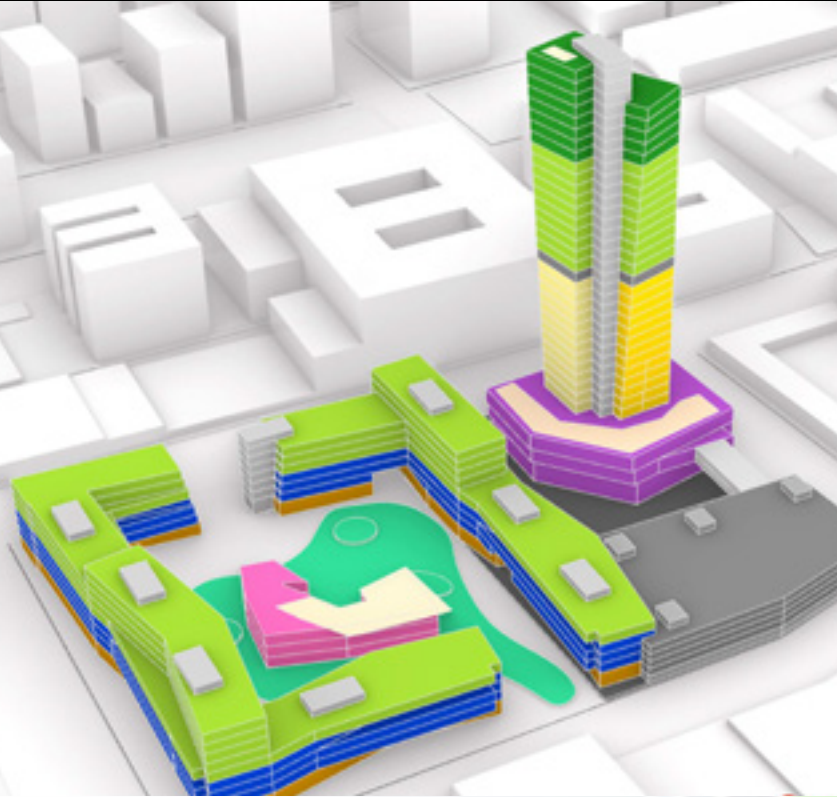
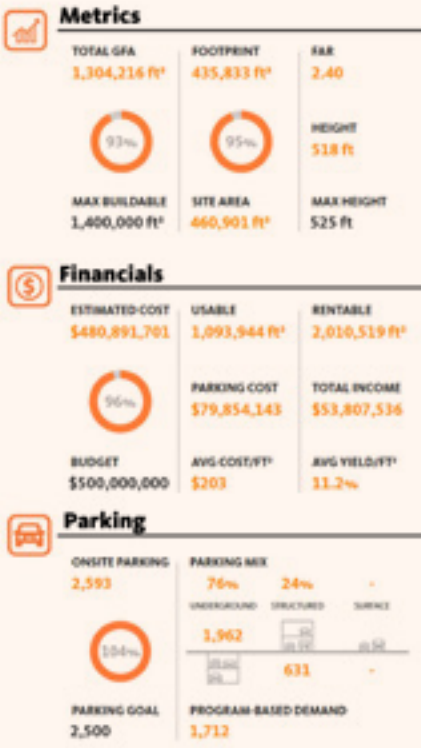
GRAPH™

To give clients insight for their most critical investments, we developed Graph™, a spatial analytics tool that uses data, AI, and spatial modeling to rapidly and efficiently reveal patterns about people, design, and experience to focus investment where it will have the biggest impact.

GENSLER'S inFORM ECOSYSTEM AND gblox PRODUCT

The inFORM ecosystem is a Gensler platform of proprietary tools built on the ethos of a symbiotic relationship between design and technology to achieve infinite possibilities. Our first tool released, gblox, furthers our ability to be agile while partnering with our clients to make informed decisions throughout the design journey. gblox leverages designer- and client-defined metrics that are adjustable in real time, allowing clients to study trade-offs that balance form finding with market-specific insights on capital assets.

We're inventing new proprietary tools for our designers who are tackling complex global challenges.



INTELLIGENT PLACES

We are developing our design practices to integrate data, AI, and intelligent building systems to create smart places that have meaningful outcomes. In response to the pandemic, data can help inform how organizations can adapt and create healthier environments.



METRICS

DATA-RICH CONCEPTUAL DESIGN PRODUCT

Blocking + Stacking Design Experience
Live Data Enables Rapid, Informed Decision Making
FAR, Zoning, GFA, and Usable/Rentable Areas



FINANCIALS

FINANCIAL MODELING

Cost Impact of Design Decisions
Study Budget, Cost, and Yield Options
Program-Specific Cost and Yield Analysis



PARKING

DYNAMIC PARKING METRICS

Real-Time Parking Counts
Calculates Program-Based Demand
Support Garage, Below Grade, and Surface

inFORM

gblox
POWERED BY GENSLER

DIGITAL EXPERIENCE DESIGN (DXD)

Post-pandemic, physical environments will no longer be a single place, but a collection of connected physical and digital spaces. Our DXD services connect physical and digital design by delivering holistic strategies and integrated designs for the built environment.

To drive innovation for our clients, we must push the boundaries of architecture, design, and technology.



For Cadillac House Shanghai (*above*), an immersive, multi-functional space brings the brand's passion and creative vision beyond the automotive realm, encouraging consumers to experience Cadillac in new and inspiring ways. For Incheon's International Airport Terminal 2 in Incheon, Korea (*at right*), digital and physical experiences encourage exploration and discovery.

ABOVE: Cadillac House, Shanghai
BELOW: Incheon International Airport Terminal 2, Incheon, Korea



This workplace engages visitors with a jumbotron and programmable lights, while digital totems provide live news and sports feeds.

Entercom Communications Headquarters, Philadelphia

THE HOMEWORK SERIES

The firm launched the *Homework* series, a broad range of ideas and design from around our global design teams capturing the firm's spirit, as expressed through our design work. Homework gives us an opportunity to share and celebrate the design that's happening in today's challenged context from our homes.

Invention and innovation
are propelling our
design thinking.



V.1



V.2



V.3



V.4

Q:
HOW ARE WE
NOW EXPRESSING
OUR PROJECT IDEAS
AND VISION?

Q:
WHAT DOES OUR
DESIGN WORK
LOOK LIKE WHEN
WE'RE ALL WORKING
FROM HOME?



GLOBAL DESIGN CHARRETTE



2020 GENSLER GLOBAL DESIGN CHARRETTE

In May, Gensler announced a month-long Global Design Charrette to unleash the firm's creativity to understand the dynamic issues posed by the COVID-19 pandemic, and envision what a post-pandemic reality may look like. Open to everyone in the firm, the charrette ignited the firm's creativity and surfaced design ideas for influencing the human experience in a post-pandemic society. The charrette is now an ongoing platform to harness the firm's global creativity and showcase a diverse array of solutions that go beyond our everyday project work to address pain points in our communities.

Our global design community is finding new ways to collaborate, sparking innovative design solutions from around the firm.

TO DRIVE INNOVATION FOR OUR CLIENTS IN THIS MOMENT OF TRANSFORMATION, WE MUST PUSH THE BOUNDARIES OF ARCHITECTURE, DESIGN, AND TECHNOLOGY.

With an unparalleled amount of indoor-outdoor work and social spaces, EPIC is a model for innovative design for creative office buildings in urban environments. Rather than focus on vertical stature, the design team created a terraced mass that is driven by a new paradigm of indoor-outdoor creative workplace on all floors.

EPIC, Hudson Pacific Properties, Los Angeles



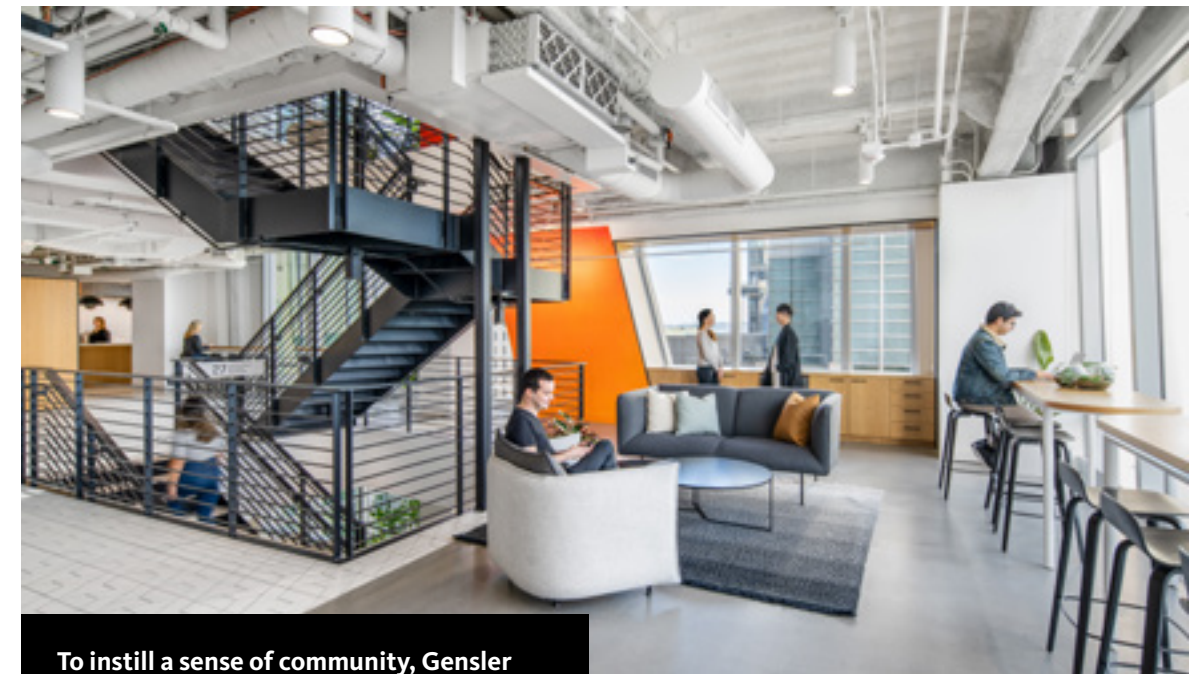
Gensler transformed a warehouse into this vibrant office building in the heart of Beijing. Adaptive reuse extends the building's lifecycle and reduces its carbon footprint.

Universal Creative Square, Beijing



Gensler Minneapolis' new office is part idea laboratory, part maker space, and part showroom for the firm's best-in-class workplace design.

Gensler Minneapolis, Minneapolis



To instill a sense of community, Gensler designed and fit-out a vertical campus that encompasses 38 commercial floors and accommodates nearly 2,500 employees.

Confidential Technology Company, San Francisco

We repositioned a turn-of-the-century timber-framed warehouse into a contemporary office building in the heart of Chicago. By salvaging the original building façade and structure and designing the addition with fly ash, EAF steel, and interior wood studs, we reduced the project's embodied carbon by 81%.

550 W Randolph - Repositioning & Expansion, Chicago



The importance of human connection—and the role buildings play in facilitating those connections—has become more important since the pandemic. This data science coworking space in San Francisco's Ferry Building provides a stage for people to gather, connect, and create value in the world.

Confidential Technology Coworking Site, San Francisco





Gensler led the interior design of public interior spaces, as well as the design for a new façade and rooftop gardens, for this existing spec office building. The repositioning focused on generating connections to people and the surrounding context, and reimagining the building to create a more engaging urban fabric.

Confidential Client, Paris





Sidley Austin's new London headquarters marries the law firm's brand identity as a heritage institution with a forward-looking and progressive workspace.

Sidley Austin, London



This 150-acre “corporate district” blends three corporate campuses with a mixed-use neighborhood composed of housing, retail, and offices—all connected to Dallas by light rail transit.

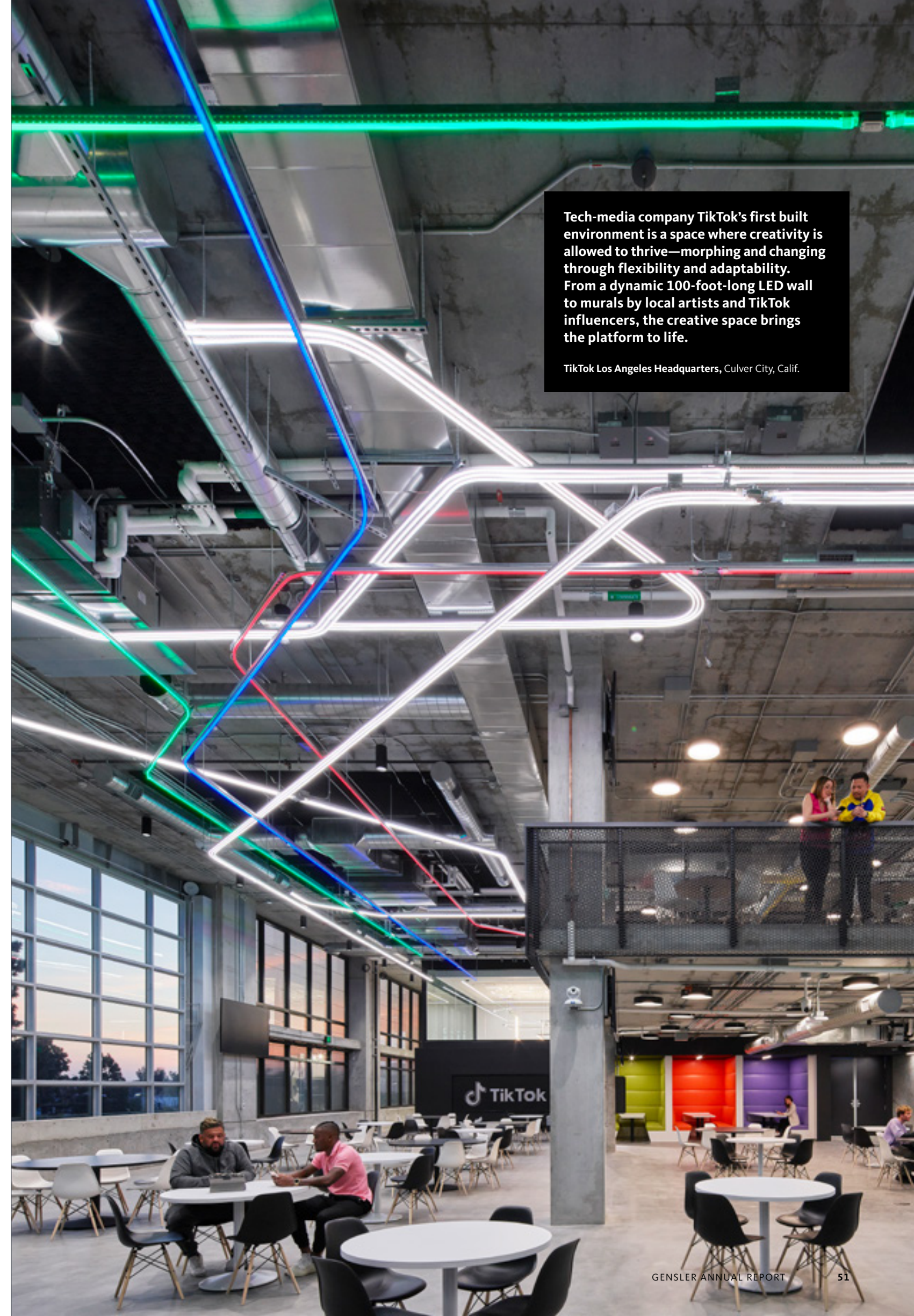
Verizon Hidden Ridge Concept, Irving, Texas



NVIDIA headquarters aims to encourage informal interactions and impromptu meetings everywhere, from the stairwells to the activity-filled lobby shown here.

NVIDIA, Santa Clara, Calif.





Tech-media company TikTok's first built environment is a space where creativity is allowed to thrive—morphing and changing through flexibility and adaptability. From a dynamic 100-foot-long LED wall to murals by local artists and TikTok influencers, the creative space brings the platform to life.

TikTok Los Angeles Headquarters, Culver City, Calif.



Boston Properties engaged Gensler to design a top-to-bottom repositioning effort targeted at attracting tech start-ups and professional services firms. The most dramatic and impactful change is in the atrium, where a horizontally oriented space is transformed into a vertical campus that encourages human interaction, collaboration, and connectivity.

Metropolitan Square Repositioning, Washington, D.C.



At nearly 500-meters high, the Suzhou Zhongnan Center will be the world's tallest apartment tower by occupiable height when completed in 2026. It provides a unique model for understanding how the future of tall buildings are shifting to reconnect with the urban fabric, emphasize social connections, and create vertical communities.

Suzhou Zhongnan Center, Suzhou, China

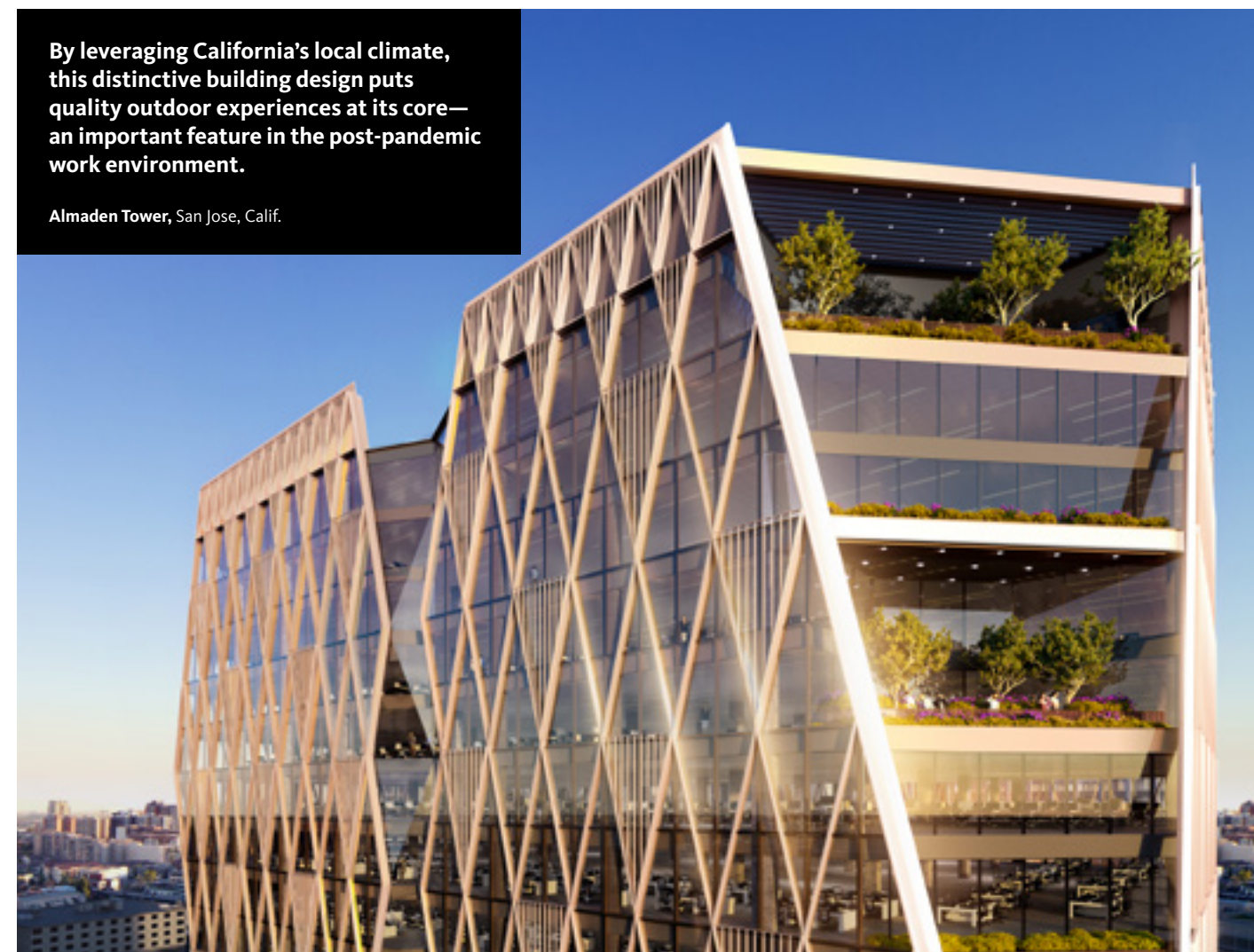


This new breed of tech office development generates dramatic exterior spaces, creating unique visual connections between floors with high-bay steel framing and staggered floors.

1200 West Carroll, Chicago

By leveraging California's local climate, this distinctive building design puts quality outdoor experiences at its core—an important feature in the post-pandemic work environment.

Almaden Tower, San Jose, Calif.





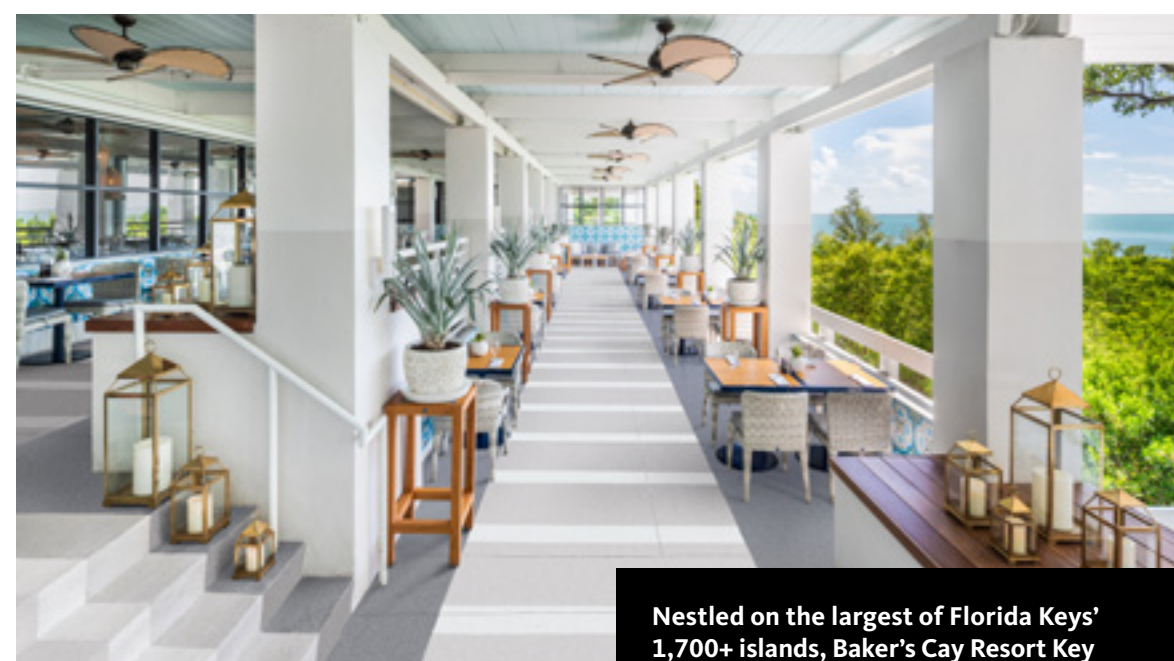
Gensler created a “from the city to the park” concept for this Costa Rican lifestyle center that transcends the typical retail center.

The Garden, Escazu, Costa Rica



The design for this culturally significant store uses materials that present a retro and nostalgic feel, while using digital technology to enliven the consumer experience.

Far Eastern Group A13 Department Store I, Taipei, Taiwan



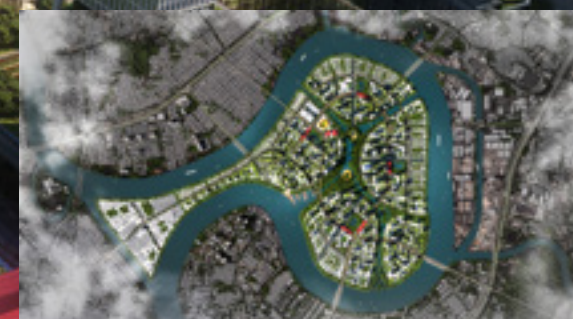
Nestled on the largest of Florida Keys' 1,700+ islands, Baker's Cay Resort Key Largo, Curio Collection by Hilton is one of the area's top hotels.

Baker's Cay Resort, Key Largo, Fla.

This future home of Chinese professional club Guangzhou Evergrande Taobao F.C. will be the world's largest soccer-specific stadium. The stadium's metallic, polyhedral form is material-efficient, with perforated aluminum, ensuring good ventilation; translucent ETFE, ensuring daylight access; and photovoltaic glass, generating clean energy.

Guangzhou Evergrande Football Stadium,
Guangzhou, China





In conjunction with Bitexco Group, Gensler developed a master plan for Thanh Da, an island district with potential to unite urban with natural, and land with water. Sustainability anchors the project, with “water urbanism” elements ranging from floating gardens to green roofs that collect rainwater and reduce heat gain.

Thanh Da Island, Ho Chi Minh City, Vietnam



Recognizing that learning happens in many ways and in various places, Gensler's design for Tarrant County College's new Northwest Campus includes fluid, exposed spaces that can adapt to students' needs and interactions. The campus engages the community through an amphitheater and public theater with lectures, concerts, and other programming.

Tarrant County College Northwest Campus,
Fort Worth, Texas



The design of this airport in Colorado reflects the region's aesthetic and enhances its operational function during peak tourism season. To right-size the concourse, we created a "blended space" that includes concession dining, casual seating, a long banquette, a bar, and high-top tables.

Eagle County Regional Airport, Gypsum, Colo.



With little to no open space available, this masterplan constructs 3,000,000 square feet of new health care space above the existing hospital while it remains fully operational. Once the new space is completed, the old building will be demolished—with 90% of the ground area covered in open parkland.

Concept Masterplan for National University Hospital, Singapore



Gensler is collaborating with a large New York City healthcare organization to build a facility that will support an innovative care model and meet current and future demands for care.

Confidential Health Center, Queens, N.Y.

Gensler's concept for the Electrical Vehicle Enclave (EVE) Park envisions the future of net-zero, innovative residential developments. Comprised of 52 townhouse units with an autonomous vehicle network, a hydroponic farm, and solar panels, the net-positive approach to community planning prioritizes on-site energy generation to reduce the community's carbon footprint and emissions.

s2e EVE Park, London, Ontario



GIVING BACK IS MORE IMPORTANT THAN EVER

—
The work we do in our communities has taken on greater urgency amid the pandemic, economic recession, and issues of racism and social justice. We're focusing our creativity and compassion to support underserved people.

THE PANDEMIC REINFORCED OUR CULTURE OF GIVING BACK

From fabricating face shields and masks for health care workers, to reimagining boarded storefronts, our volunteers have doubled down on our community impact efforts.

EQUITABLE HOUSING MUST BE A PRIORITY

The firm has announced a call to action for every office to create a measurable, meaningful change toward equitable housing options.

OUR RESPONSE TO COVID-19 P.72

HOUSING & HOMELESSNESS CALL TO ACTION P.73

OUR PROJECTS CREATE MEASURABLE SOCIAL IMPACT

Our Community Impact Awards recognize projects, programs, or initiatives that make a difference.

2020 COMMUNITY IMPACT AWARDS P.74

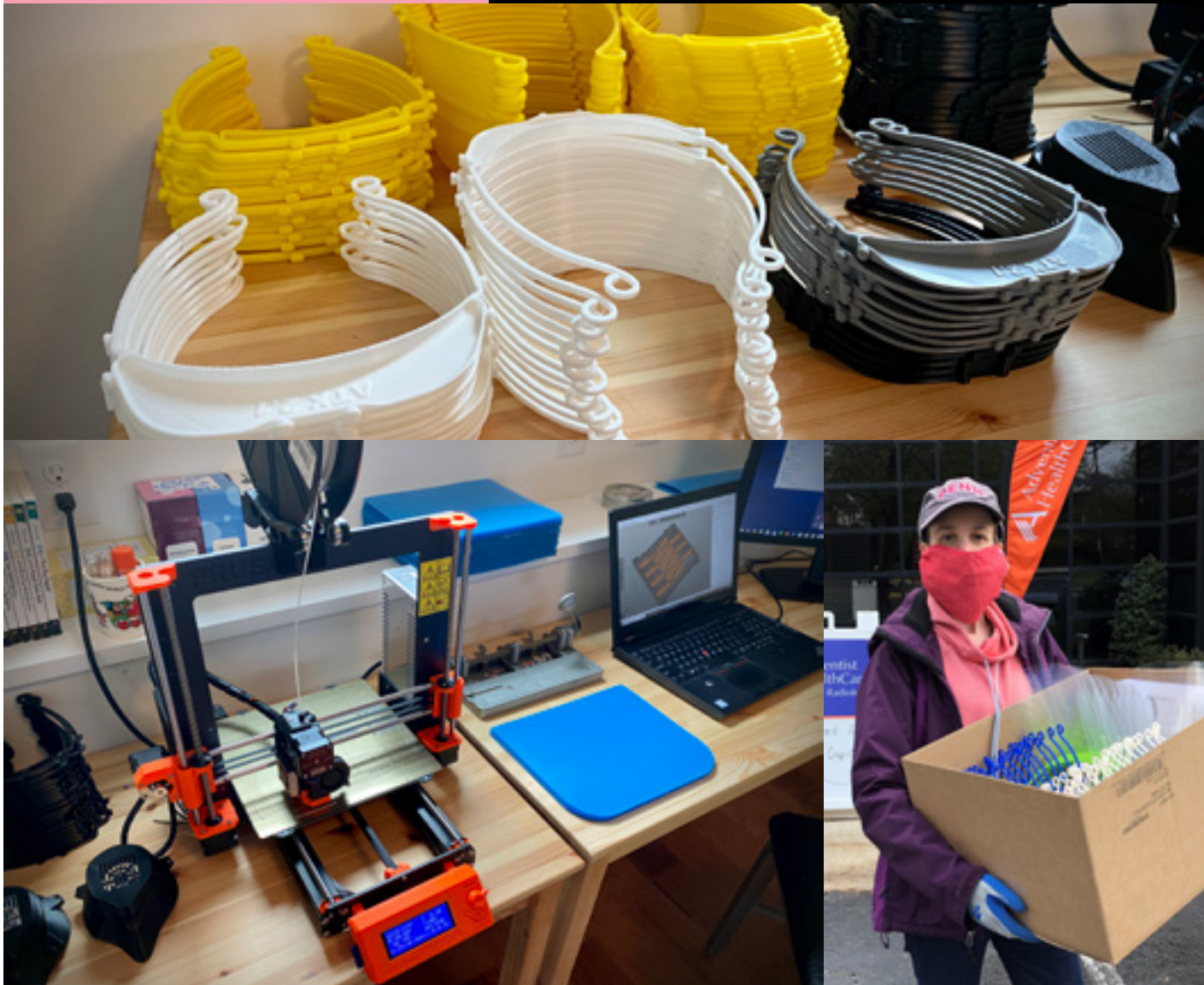
After COVID-19 triggered an economic recession, we helped small business owners revitalize abandoned storefronts.

Color Speaks, Seattle

OUR RESPONSE TO COVID-19

Early in the pandemic, we recognized the need to double down on our community impact efforts. Volunteer fabricators in 22 cities created 3,047 face shields and 1,996 specialty PPE parts and donated them to healthcare workers in the U.S. and Costa Rica, while others donated 1,293 sewn fabric masks. Designers from our Seattle, Portland, and San Francisco offices partnered with local small business owners to help reimagine and revitalize their boarded storefronts.

The pandemic is reinforcing our culture of giving back to communities in need.



WE'RE FOCUSED ON FOUR IMPACT AREAS TO HELP SOLVE OUR CITIES' BIGGEST CHALLENGES.

GENSLER'S COMMUNITY IMPACT MODEL organizes our philanthropic and volunteer efforts with a focused strategy to be part of the solution to the major issues facing cities. We encourage offices to dedicate at least 80% of their Community Impact resources to one or more of our four themes: **housing and homelessness, health and wellness, the environment**, and **the next generation**, while the remaining 20% allows for new opportunities and innovative ideas.

HOUSING + HOMELESSNESS
We acknowledge homelessness as one of the most serious issues facing cities across the globe today. This problem is exacerbated by the lack of affordable and workforce housing. We're committed to developing creative and replicable solutions for innovative housing that answers the need for quality, equitable shelter for all.



HOUSING & HOMELESSNESS CALL TO ACTION

Three billion people are expected to move to cities by 2050, creating a demand for 96,000 new affordable housing units every day. In line with our commitment to shaping the future of cities, Gensler announced a call to action for every office to create a measurable, meaningful change toward equitable housing options beginning in fiscal year 2021. Urban Awnings (project, above) is a housing concept for individuals and families of differing income levels, ranging from permanent supportive to affordable units of various sizes, using prefab construction. It was created by Gensler's Los Angeles office.

The global housing crisis is one of the biggest problems facing cities today.

92% IN 2019–20, 92% OF OUR OFFICES FOUND CREATIVE WAYS TO GIVE BACK, INCLUDING THROUGH REMOTE VOLUNTEERISM AS INDIVIDUALS AND VIRTUAL TEAMS.

THE ENVIRONMENT
Gensler is committed to protecting the environment, preserving open space and the natural environment, and designing buildings, communities, and cities that are sustainable and resilient in the face of intensifying climate change. We develop innovative designs to mitigate the impact of climate change and to address its root causes.

HEALTH + WELLNESS
Gensler is dedicated to building healthy places that will produce positive health outcomes for all who use them. Our designs create spaces that promote activity and overall healthy living, combine functionality and comfort, and promote equitable access for all.

THE NEXT GENERATION
Our relationships with organizations that support the well-being of children and students are important to us. Through our partnerships with programs such as ACE Mentorship, NOMA, The Boys and Girls Club, and City Year, we're supporting children, families, and students, while ensuring a diverse pipeline of talent for the architecture profession.

2020 GENSLER
COMMUNITY IMPACT
AWARDS

Now in its fifth year, the Community Impact Awards honor one volunteer or pro bono project in each of the impact areas that embody the Firm's vision to Create a Better World Through the Power of Design. The awards recognize individuals and teams for excellence in the design and implementation of projects, programs, or initiatives that create measurable social impact. The winners are chosen by an external jury of experts in each category.

Our projects and
programs are having
measurable social impact.



JURY

Sonia Watson,
Chief Executive,
Stephen Lawrence
Charitable Trust

Joe Wong,
Sustainability
Manager,
ExxonMobil

John Messervy,
Corporate Director
of Design &
Construction, Mass
General Brigham

Sarah Dusseault,
Chair, LA Homeless
Services Authority

John Murray,
Facilities &
Engineering
Director, Bristol
Myers Squibb

*We encourage offices to dedicate at least 80% of their Community Impact resources to one or more of our four impact areas, while the remaining 20% allows for new opportunities and innovative ideas.

THE ENVIRONMENT

Food Cycle Compost Program,
San José, Costa Rica



THE 20%*

LGBTQ Center for the Arts,
San Francisco



HEALTH & WELLNESS

Children's Hope Shelter, Beijing



NEXT GENERATION

Los Angeles Public Library Digital Media
Labs, Los Angeles



HOUSING & HOMELESSNESS

City of Light,
La Carpio-Pavas, Costa Rica

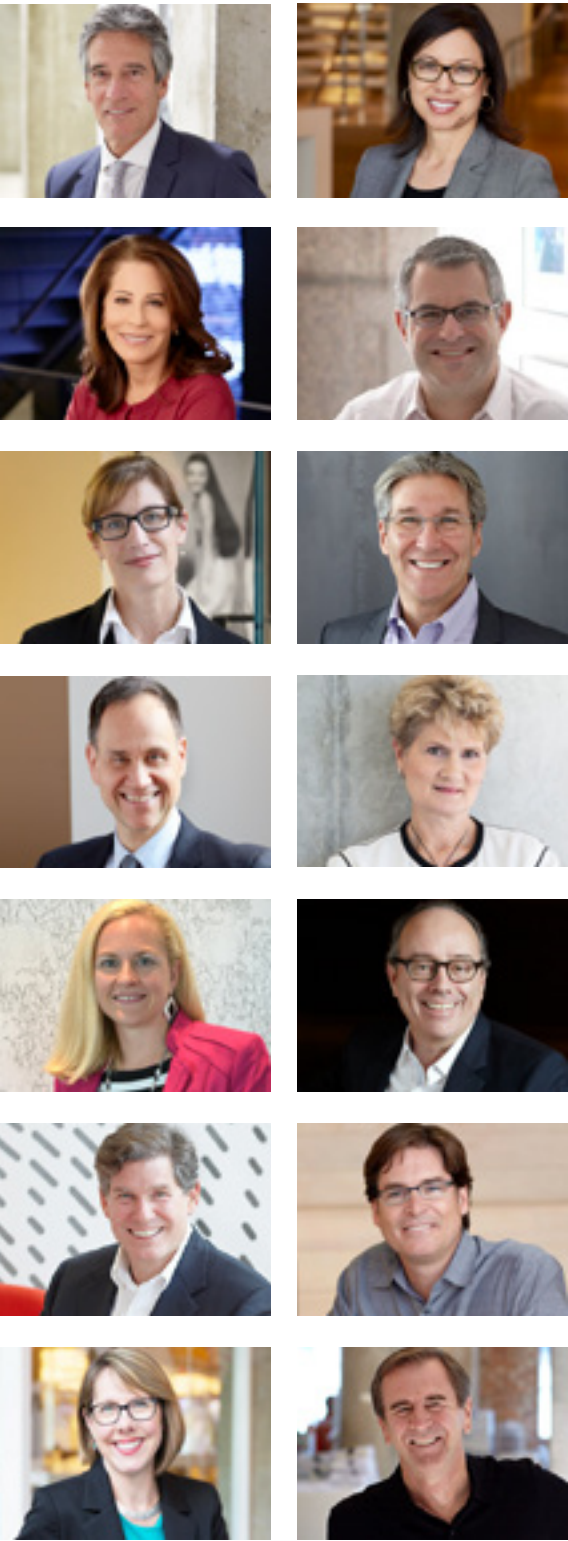


More than 3 million people move into the world's cities every week. This has put an enormous demand on urban housing in general and affordable housing in particular. To meet this demand, we are designing various housing types, including this modular bridge housing system that can temporarily house more than 5,000 families.

City of Light, La Carpio-Pavas, Costa Rica



A MESSAGE FROM THE BOARD



BOARD OF DIRECTORS
ABOVE, FROM TOP LEFT: Joseph Brancato, Diane Hoskins, Robin Klehr Avia, Jordan Goldstein, Julia Simet, Andy Cohen, Rocco Gianetti, Judy Pesek, Whitley Wood, Ray Shick, Rob Jernigan, John Adams, Janet Pogue McLaurin, Dan Winey

2020 has been a year unlike any that we have experienced in our firm's 55-year history. The pandemic, the recession, and social upheaval have created a moment in time that none of us will forget. Yet, in spite of the extreme nature of these challenges, we know that Gensler will emerge stronger than ever.

We are transforming. Each day, our people, our culture, and our leaders are adapting, innovating, and evolving as we invent new design solutions, find new ways to connect with clients, build new services, and enlarge our market influence. It's an exceptionally tough time, but it's also an exceptionally exciting time of growth and change.

As we look at what's next, we know that the past is not the answer. Our conversations with clients and people in our communities are centered on the post-pandemic world and the new norms that are emerging. Perhaps we will emerge from this period into a renaissance of hyper innovation and fast-forwarding technological transformation. Perhaps we are awakening to new levels of commitment and investment in social justice, resilience, and health. We are working to develop the ideas that will likely help to shape the world to come. Through this transformative time, Gensler is emerging as an even larger voice, influencer, and innovator in creating the future of our cities for people. Our purpose has never been so clear.

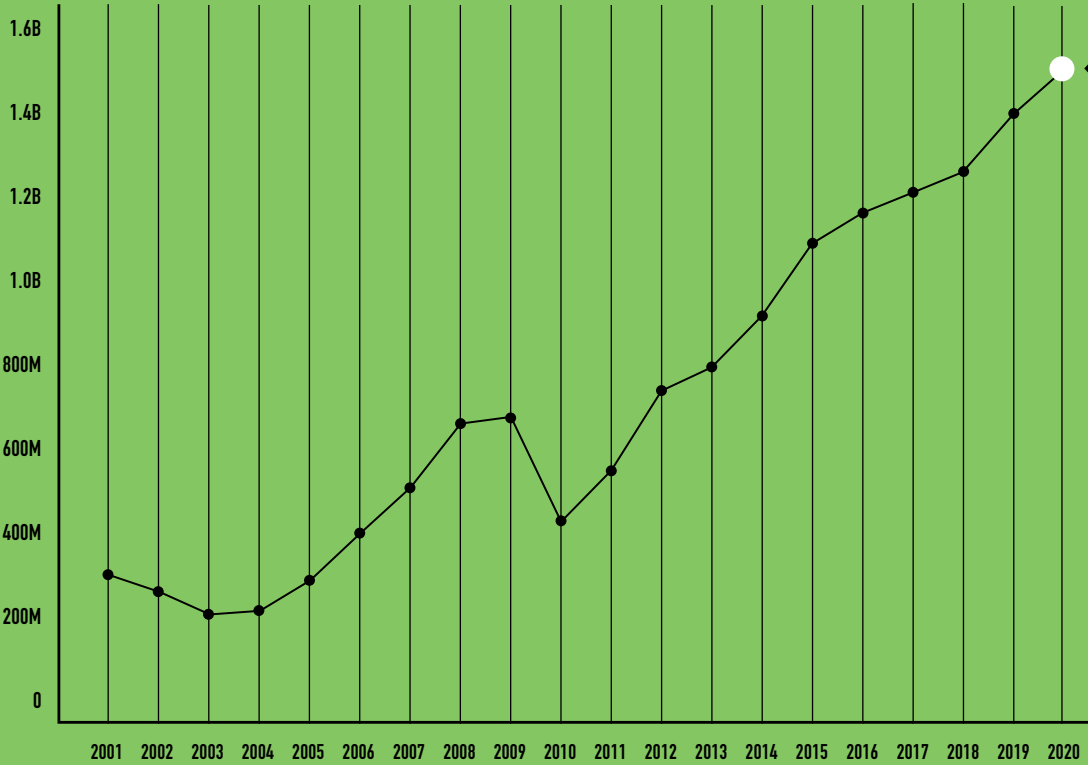
In the midst of this storm, we are energized by the brilliance of our people and the incredible partnerships we have with our clients and partners in our communities. We know that better days are ahead, and we are proud to be part of the solution.

Diane Hoskins
FAIA, IIDA
Co-Chair of the Board

Joseph Brancato
FAIA, NCARB
Co-Chair of the Board

FINANCE REPORT (revenue in USD)

We're operating globally across 50 locations, with total revenues for the year setting a new record high for the firm.



\$1.55B

2020 TOTAL REVENUE
The upward trend in revenues remains steady over the past nine years.

\$39.7M
TOTAL CONTRIBUTIONS
Contributions to U.S. and international retirement plans (USD).

100%
EMPLOYEE OWNERSHIP
Gensler is fully employee-owned through direct shares and our ESOP.

TOP RANKING REPORT

Gensler is a leader among the world's architecture and design firms. Our standing among peers and our industry awards reflect the value we deliver to clients every day.

Architectural Record
2020 Top 300 Architecture Firms:
#1 Firm

Building Design + Construction
2019 Giants 300:
#1 Architecture Firm
#1 Hotel Sector Architecture Firm
#1 Office Sector Architecture Firm
#1 University Sector Architecture Firm

ENR
2020 Top 500 Design Firms:
#1 Architecture Firm

ENR
2019 Top 100 Green Building Design Firms:
#1 Firm Overall

Interior Design
2020 Top 100 Giants:
#1 Architecture Firm
#1 Most Admired Firm
#1 Cultural
#1 Office
#1 Retail
#1 Transportation

TOP AWARDS 2019–2020

Top design awards won across the firm in 2019 and 2020. Here are some highlights:

AIA—2020 AIA Awards
Interior Architecture
Dandelion Chocolate Factory, San Francisco
Ford Foundation for Social Justice, New York

AIA—2020 COTE Top Ten Awards
Interior Architecture
Etsy, New York
Ford Foundation for Social Justice, New York
UPCycle, Austin, Texas

AIA Shanghai—2019 Design Awards
Interior Architecture
Cadillac House Shanghai (Merit Award)

Boutique Design
2019 Gold Key Awards for Excellence in Hospitality Design
Waldorf Astoria Bangkok (Best Lobby, Luxury)

China Architectural Society
Architectural Creation Award (2009–2019)
Shanghai Tower, Shanghai

Contract
2020 Inspiration Awards
Lupita's Corner, Los Angeles

Dezeen
2019 Awards 2019
Gusto, San Francisco (Large Workspace Interior of the Year)

#1

BACKED BY GREAT CLIENTS, WE CONTINUE TO EARN INDUSTRY RECOGNITION YEAR AFTER YEAR

Fast Company
2019 Innovation by Design Awards
Shaw Create Centre, Cartersville, Ga. (Workplace)

IIDA
2019 IIDA Global Excellence Awards
Pixel Factory, Seoul (Corporate Space Large)

IFI
2019 IFI Global Awards
NVIDIA, Santa Clara, Calif. (Silver, Work)

Interior Design
2019 Best of Year Awards
AKC Museum of the Dog, New York (Environmental Branding/Graphics)
Campari Group North American Headquarters, New York (Corporate Cafeteria/Bar)
Ford Foundation for Social Justice, New York (Office Transformation)
Gensler Collection by The Rug Company (Modular Carpet)
Stylex Free Address (Contract Furniture Collection)

MIPIM
2019 Asia Awards 2019
One Museum Place, Shanghai (Best Green Development)

Reed MIDEM
2019 MAPIC Awards
Microsoft Oxford Circus, London (Best Retail Store Design)

Retail Design Institute
2019 International Store Design Competition
Cadillac House, Shanghai (Store of the Year; Innovation Award, Architecture; Innovation Award, Customer Experience; Innovation Award, Digital Integration)
Saks Fifth Avenue, New York (Innovation Award, Digital Integration)

The Architect's Newspaper
Best of Design Awards
Del Mar College South Campus, New York (Unbuilt – Education)
Ford Foundation for Social Justice, New York (Building Renovation – Commercial)
Skid Row Housing, Ambrosia, Los Angeles (Unbuilt – Residential)

World Interior News
2019 WIN Awards
Atelier (Gold, Interior Products)
Pixel Factory, Seoul (Gold, Corporate Offices under 5000 sqm)
Your Space, London (Silver, Branding, and Wayfinding)

RECOGNIZING OUR DESIGN TALENT

GENSLER NAMED ONE OF GLASSDOOR'S BEST PLACES TO WORK IN 2020

For the fourth year, Gensler is among the winners of the annual Glassdoor Employees' Choice Awards, recognizing the Best Places to Work in 2020 in the United States. Gensler is one of 100 organizations in the Large Companies category (among employers with 1,000 people or more). The Employees' Choice Award measures overall team member satisfaction based on workplace factors such as career opportunities, benefits, compensation, and work/life balance, as well as organizational culture and values. The award is determined by feedback from voluntarily shared reviews on Glassdoor, and stands as a testament to the Gensler community. The firm also received this award in 2018, 2017, and 2016.



Gensler Raleigh, Raleigh, N.C.

INTERIOR DESIGN
#01

GENSLER RANKS NO. 1, AGAIN

For the fifth consecutive year, Gensler received the #1 rank overall in *Building Design's* World Architecture 100 2019. The firm also earned the #1 spot on the 2020 *Interior Design* 100 Giants list, and the Most Admired Firm. Gensler was also recognized as one of the "2020 Top 500 Design Firms" by *Engineering News-Record*, ranking #10 overall and the top-ranked architecture-only firm for the 10th consecutive year.

GENSLER NAMED AMONG FAST COMPANY'S LIST OF MOST IMPORTANT DESIGN COMPANIES

Fast Company named Gensler among "The 30 most important design companies of 2019." Additionally, the publication recognized several Gensler projects for its 2019 Innovation by Design Awards: Shaw Create Centre was named "Most Innovative Workplace Design of the Year"; Cadillac House Shanghai was a finalist in Retail Environments; Sfera Legal was a finalist in Best Design Latin America; School of Leadership, Afghanistan (SOLA) was a finalist in Social Good; Kinder High School for the Performing and Visual Arts received an honorable mention in Learning; and AKC Museum of the Dog received an honorable mention in the UX category. Winners, finalists, and honorees were featured in the magazine's October issue and recognized at *Fast Company's* Innovation Festival in November.



Campari, New York

INTERIOR DESIGN HONORS BEST OF YEAR WINNERS

Gensler projects were among the winners for *Interior Design's* 2019 Best of Year (BOY) Awards. In Best Projects, Ford Foundation Center for Social Justice won the Office Transformation category, Campari Group North American Headquarters won in Corporate Cafeteria/Bar, and American Kennel Club (AKC) Museum of the Dog won in Environmental Branding/Graphics. In Best Products, Gensler Collection by The Rug Company won the Modular Carpet category, Stylex - Free Address won in the Contract Furniture Collection category, and Atelier by Gensler by Fantoni was named an Honoree in Contract Furniture Collection. Winners and honorees are featured in the December issue of *Interior Design*.



AKC Museum of the Dog, New York

GENSLER MAKES EMPLOYEE OWNERSHIP 100

Gensler was named the 21st largest employee-owned company in the United States by the National Center for Employee Ownership (NCEO). The NCEO's 2020 Employee Ownership 100 includes the nation's largest companies that are at least 50% owned by an employee stock ownership plan (ESOP) or other broad-based employee ownership plan.



Roger Sherman



Maddy Burke-Vigeland



Jordan Goldstein

GOLDSTEIN NAMED FIIDA

Jordan Goldstein, principal and global director of design, was elevated to the International Interior Design Association (IIDA) College of Fellows for 2020. Honoring members who have made outstanding contributions to both the industry and the association, this is the IIDA's highest distinction.



Susana Covarrubias

2019 DON BRINKMANN AWARD WINNER

Susana Covarrubias, a Design Director and Principal in Gensler's Seattle office, was named the recipient of the 2019 Don Brinkmann Award. The award, named in memory of an inspirational and gifted interior designer who worked at Gensler, recognizes individuals whose outstanding contributions to the firm have raised our standards of design excellence. Honorees bring exemplary talent, tireless design leadership, and vision.



Joan Price

2019 WALTER HUNT ONE-FIRM FIRM AWARD

Gensler's Joan Price received the 2019 Walter Hunt One-Firm Firm, honoring individuals who have exhibited tremendous leadership in elevating our integrated and seamless practice around the globe. As Director of Global Client Relationships, based in Gensler's San Francisco office, Price joins a team of recipients who embody our one-firm firm leadership, spirit, and culture.

GENSLER AIA FELLOWS HONORED

The American Institute of Architects elected two Gensler architects to the College of Fellows class of 2020: Maddy Burke-Vigeland and Roger Sherman. AIA Fellows are recognized with the AIA's highest membership honor for their exceptional work and contributions to architecture and society. Architects who have made significant contributions to the profession and society, and who exemplify architectural excellence can become a member of the AIA College of Fellows.



Fitgi Saint-Louis

INTERIOR DESIGN RECOGNIZES HiP AWARD WINNERS

Several Gensler people and products were honored at *Interior Design's* 2020 Honoring Industry People and Products (HiP) Awards, which honor commercial industry pioneers. Fitgi Saint-Louis was named a winner for Designer: Rising Star. For products, Smart City collaboration with Mohawk Group won in the Workplace: Flooring category and International collaboration with Dfm won in Workplace: Furniture Systems.



Michael Peng



Tifa Zhou

Susana Su-Tom

2019 DESIGN REALIZATION EXCELLENCE

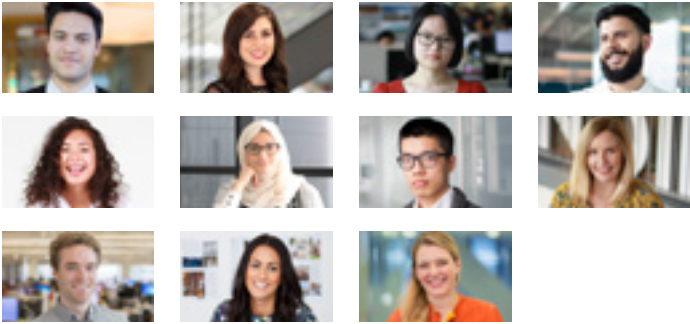
Gensler Shanghai's Michael Peng and Gensler New York's Susana Su-Tom received the 2019 Design Realization Excellence Award, celebrating exceptional people who make our projects real through technical expertise, leadership, and mentoring.

2019 GENE WATANABE AWARD

Gensler Chicago's Tifa Zhou received the 2019 Gene Watanabe Award, which celebrates visual media excellence among rising designers, represented by a significant body of work in any medium.

2019 RISING DESIGNER AWARD

Presented to individuals with less than 10 years' experience, the Rising Designer Award recognizes up-and-coming talent who develop design solutions that transform people's everyday experiences through bold, creative thinking. The selection criteria focused on the nominees' ability to showcase bold, creative thinking and raise the bar on each of their projects. Eleven winners were selected for 2019 (photos at left), representing each of the firm's regions.



ABOVE, FROM TOP LEFT: Stephen Ramos, Samantha Siegel, Ningning Guan, Mauricio Naranjo, Marissa Everling, Mariam Abu Ebeid, Jun Wang, Ellie Combs, Ben Minton, Ashleigh Robson, Adriana Oxford

LEADING THE GLOBAL CONVERSATION

SPEAKING ENGAGEMENTS



Andy Cohen was recognized at the Schools That Can Virtual Forum.

COHEN AMONG LEADERS FRAMING THE FUTURE OF EDUCATION

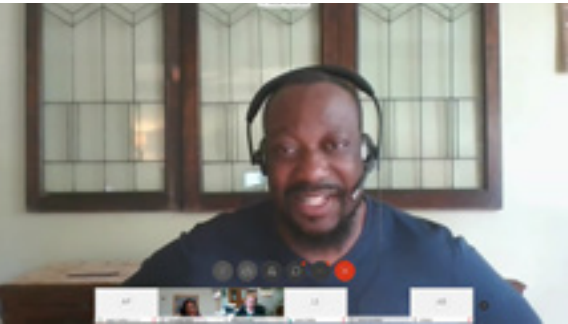
On May 20, Co-CEO Andy Cohen was recognized as a Leader That Can honoree at the Schools That Can Virtual Forum, which gathered interdisciplinary leaders, experts, and visionaries in a multi-day conference to frame the future of education. Cohen participated in two panel discussions: “Keynote: So, What Changes Post-COVID-19” and a closing plenary, “The Future of Work... the Future of Cities: Emerging Lessons of COVID-19.”



Diane Hoskins spoke in a Bisnow Town Hall.

HOSKINS CHAMPIONS GENSLER’S 5 STRATEGIES TO FIGHT RACISM

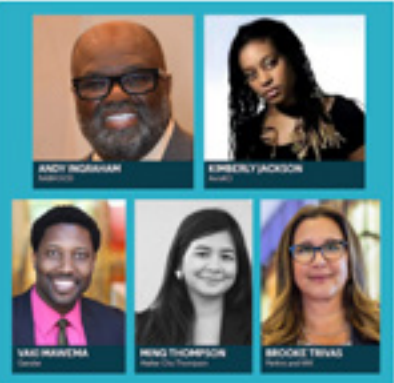
Co-CEO Diane Hoskins was the featured speaker in a Bisnow Town Hall, where she spoke about the state of the industry, Gensler’s 5 Strategies to Fight Racism, and research that assists our clients with return to the office strategies.



Andre Brumfield, panelist in AIA Large Firm Round Table discussion.

AMPLIFYING OUR VOICE TO SPEAK BOLDLY AGAINST INJUSTICE

Gensler thought leaders have featured prominently in panels and webinars, speaking boldly against racism. In June, Cities & Urban Design Leader Andre Brumfield served as a panelist on a virtual AIA Large Firm Round Table discussion around issues of justice, equity, diversity, and inclusion in architecture. In August, Gensler hosted a panel moderated by Co-Managing Director Gensler Baltimore Vaki Mawema with client panelists about social justice, diversity, and the equitable experience at work. And Lisa Cholmondeley was a panelist on IIDA Northern California chapter’s virtual panel session, “Equity & Intersectionality in the Bay Area Interior Design Profession,” discussing designers’ roles in making the interior design field equitable and inclusive.



Vaki Mawema joined a Hospitality Design panel.

MAWEMA DISCUSSES INCLUSION AND IMPACT IN THE INDUSTRY

In June, Gensler Baltimore Co-Managing Director Vaki Mawema participated on the Hospitality Design panel, “Inclusion and Impact: State of the Industry,” where he discussed diversity and design with other industry leaders.



Columbia College Student Center, Chicago

BROZ EXPLORES URBAN UNIVERSITIES DURING COVID-19

What will this fall semester look like, and how will the urban amenity transform to address a world still facing the realities of a pandemic? In July, Education Leader Dave Broz moderated an online panel for Chicago Loop Alliance on “Resetting the Urban University in a Pandemic World.”



Janet Pogue McLaurin and Jeff Barber at the ULI Fall Meeting.

POGUE MCLAURIN, BARBER SPEAK ABOUT THE FUTURE OF WORKPLACE AT ULI FALL MEETING

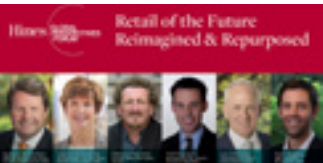
Gensler Workplace Leader Janet Pogue McLaurin and Design Leader Jeff Barber spoke at the Urban Land Institute’s Fall Meeting, where they talked about the future of work, and how creating a great workplace experience can help optimize performance. They were joined onstage by Dawn Striff, Head of Workplace Solutions at Nestlé USA, and Stacey Cohen, Senior Director of Corporate Facilities, Services & Real Estate at Marriott.



Xiaomei Lee and Peter Cho at the ULI Asia Pacific webinars.

LEE, CHO SPEAK AT ULI ASIA PACIFIC WEBINARS

In March, Xiaomei Lee, Co-Regional ManagingPrincipal for Gensler’s Greater China Region, and Peter Cho, Technical Director, Gensler Shanghai, spoke in a series of the Urban Land Institute (ULI) Asia Pacific webinars. Lee spoke at “Global Tenants and the Future Office – Healthy, Smart, Sustainable” while Cho spoke on the topic healthy environment and value creation in the webinar, “Impact by Design: Strategies for Climate Resilience.”



Duncan Paterson joined a Hines Global Perspectives Forum.

PATERSON ENVISIONS RETAIL OF THE FUTURE

Mixed Use Leader Duncan Paterson joined a Hines Global Perspectives Forum on “Retail of the Future – Reimagined & Repurposed.” The forum addressed how owners and developers of retail space must adapt their products to address the structural changes that result from the confluence of the pandemic, the transition to a digital economy, and the over-retailing of most markets in the world.

LEADING THE GLOBAL CONVERSATION

MEDIA RECOGNITION

The New York Times

HOW TO PREPARE FOR YOUR RETURN TO THE OFFICE
Elizabeth Brink

THE FUTURE OF TRAVEL
Ty Osbaugh

PANDEMIC THREATENS TO UPEND A THRIVING REAL ESTATE MODEL
Duncan Paterson



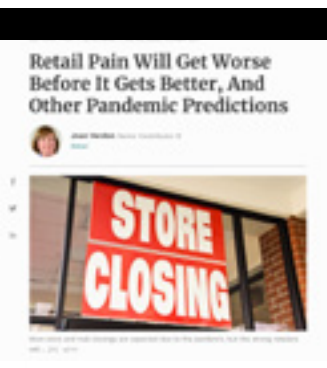
BBC

IS CLICK-AND-COLLECT THE FUTURE OF SHOPPING?
Lara Marrero

Forbes

FINDING THE RIGHT WORDS: SMART DENSITY IS CITY WELLNESS
Andy Cohen

THE FUTURE OF AIRPORT DESIGN AFTER COVID-19, ACCORDING TO AN AIRPORT ARCHITECT
Ty Osbaugh



Bloomberg

BACKUP: DON'T RETURN TO THE OFFICE UNTIL YOU READ THIS
Sheryl Schulze



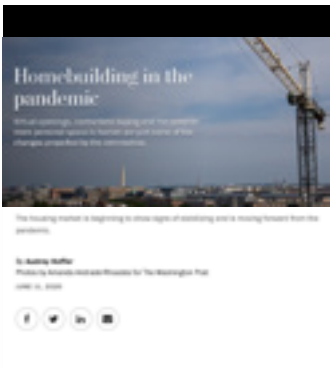
BUSINESS INSIDER

THIS IS THE FUTURE OF HOTEL DESIGN AFTER CORONAVIRUS, ACCORDING TO HOSPITALITY ARCHITECTS
Tom Ito

THE OFFICE AS WE KNEW IT IS DEAD

The Washington Post

11 WAYS THE PANDEMIC WILL CHANGE TRAVEL
Ty Osbaugh



THE WALL STREET JOURNAL

FOR CEOs, PRESSURE IS ON TO PIVOT FROM 'SAY' TO 'DO' ON INEQUALITY
Diane Hoskins

THE CORONAVIRUS ECONOMIC REOPENING WILL BE FRAGILE, PARTIAL AND SLOW
Janet Pogue McLaurin



Inc.

MEET THE TECH COMPANIES HELPING OFFICES REOPEN SAFELY
Natalie Engels

The Atlantic

THE END OF OPEN-PLAN EVERYTHING
Randy Howder

USA TODAY

WILL THE REMOTE WORK CRAZE SPARKED BY COVID-19 SOUND A DEATH KNEEL FOR OFFICE BUILDINGS?
Gensler WFH survey

FROM STAGGERED HOURS TO AUTOMATIC DOORS, HOW OFFICES MIGHT LOOK DIFFERENT AMID THE PANDEMIC

AXIOS

A BLUEPRINT FOR MANAGING COLLEGES DURING CORONAVIRUS
Dave Broz

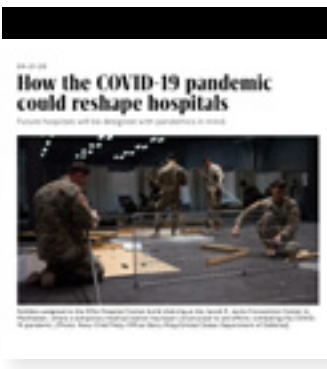
FAST COMPANY

WE SHOULD START GIVING NAMES TO EXTREME HEAT WAVES
Mallory Taub

I WAS UNDER LOCKDOWN IN CHINA. HERE'S WHAT IT'S REALLY LIKE TO GO BACK TO WORK
Francois Chimier

FROM 'OFFICES' TO GIANT SNEEZE GUARDS: HOW COVID-19 WILL CHANGE YOUR OPEN OFFICE
Todd Heiser

SIX EXPERTS ON HOW WE'LL LIVE, WORK, AND PLAY IN CITIES AFTER COVID-19
Andy Cohen



THE COMMERCIAL OBSERVER

CITIES RETHINK THEIR USE OF PUBLIC SPACE
Andy Cohen

BISNOW

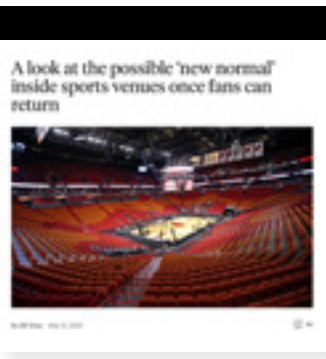
MY NEW NORMAL: GENSLER CO-CEO ANDY COHEN
Andy Cohen

FLEXIBILITY, WELLNESS TO TAKE CENTER STAGE IN FUTURE DESIGN

THE BUSINESS JOURNALS

NEW STUDY FINDS MAJORITY OF U.S. WORKERS WANT TO BE BACK IN THE OFFICE
Gensler WFH Survey

THE ATHLETIC



QUARTZ

WELCOME TO THE OFFICE: HOW TO DESIGN AN OFFICE THAT EMPLOYEES WILL WANT TO RETURN TO
Manan Shah

ARCHITECTURAL RECORD

ARCHITECTS ADVISE ON SAFELY REOPENING OFFICES

Archinect

GENSLER LAUNCHES BLOX, AN ALGORITHM-POWERED DESIGN VISUALIZATION AND COMPUTATION TOOL
Joseph Joseph

INTERIOR DESIGN

STATE OF THE INDUSTRY WITH GENSLER
Diane Hoskins and Andy Cohen

METROPOLIS

ARE OUR COVID-19 RESPONSES MISSING THE BIG PICTURE?
Anthony Brower



ARCHITECT

THE BACK TO SCHOOL FACILITIES TOOLKIT HELPS VISUALIZE SCHOOL DESIGN AFTER COVID-19
Mark Thaler

HOLD THE PLEXIGLAS: RE-ENVISIONING OFFICE DESIGN DURING AND AFTER COVID-19
Elizabeth Brink

BUILDING A CENTRALIZED EQUITY FRAMEWORK INTO ARCHITECTURE
Imani Day

Chicago Tribune

WILL THE OPEN-PLAN OFFICE MAKE YOU VULNERABLE TO CORONAVIRUS? OR WILL THE VIRUS CRISIS FORCE OFFICES TO BECOME SAFER?

Dallas Business Journal

NEW STUDY FINDS MAJORITY OF U.S. WORKERS WANT TO BE BACK IN THE OFFICE

2019 GENSLEA DESIGN EXCELLENCE AWARDS (GDEA)

Now in its 20th year, the Gensler Design Excellence Awards (GDEA) program sets a standard of excellence that nurtures and elevates our design culture. The rigorous review process begins with staff in each of the firm's 11 regions, who critique projects from outside their region, which are then vetted by design leaders. A shortlist is critiqued by an external jury, who deliberate over 104 projects to recognize during a live broadcast to the firm.



Design can reshape our changing world.

JURY

Michelle Addington
Dean, School of Architecture at The University of Texas at Austin

Paul Darrah
Director of Real Estate NYC, Google

Dean Adler
CEO and Co-Founder, Lubert-Adler Partners, L.P.

Scott Poole
Dean, College of Architecture and Design at The University of Tennessee Knoxville

Cindy Allen
Editor-in-Chief, *Interior Design* magazine

Elizabeth Razzi
Editor-in-Chief, *Urban Land* magazine

Neil Brooker
Chief Operations Officer, BMW Designworks

HIGHLIGHTS



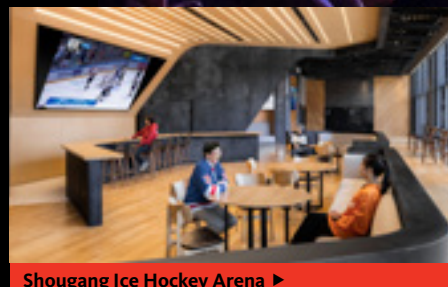
Debbie Allen Dance Academy



One Westside



MOMENT at San Pedro Squared



Shougang Ice Hockey Arena ▶

WORKPLACE AWARDS

One Westside,
Los Angeles

2112 Penn (Square 75), Washington, D.C.

2400 Market,
Philadelphia

Campari Group North American Headquarters,
New York

Ford Foundation Center for Social Justice,
New York

Intel Lobby Megalab, Heredia, Costa Rica

JPL/NASA Flight Electronics Integration Facility,
Pasadena, Calif.

Urban Interactive District,
Amsterdam

LIFESTYLE AWARDS

Shougang Ice Hockey Arena,
Beijing

Dandelion Chocolate Factory,
San Francisco

Microsoft Store Oxford Circus,
London

COMMUNITY AWARDS

Debbie Allen Dance Academy,
Los Angeles

Pavillon Notre-Dame, Paris

Museo del Oro Precolombino,
San José, Costa Rica

MARGO AWARD

MOMENT at San Pedro Squared,
San Jose, Calif.



2020 GENSLER RESEARCH & INNOVATION AWARDS

The GRIAs recognize individuals and teams within the firm who are pushing the boundaries of projects and processes to explore, lead, and imagine the future. For the first time, the GRIAs were held virtually and announced live to 6,000+ homes in 18 countries. An external jury selected the winners out of 174 submissions. The program, redefined as The Gensler Research and Innovation Accelerator, transforms the GRIAs from a one-day celebration into a year-round movement.



RESEARCH AWARDS

- Impact Winner

Living Communities
- Challenge Winner

D2 (Designing for Disassembly)
- Process Winner

Coastal Resilience
- Vision Winner

Urban Office to Residential
- JURY

Anthony Barrows
ideas42
- Rana Abudayyeh
University of Tennessee, Knoxville
- Karim Khalifa
Sidewalk Labs
- Julia Kane Africa
Biophilic & landscape design research consultant

Our culture of research and innovation is designing the future.

INNOVATION AWARDS

- Impact Winner

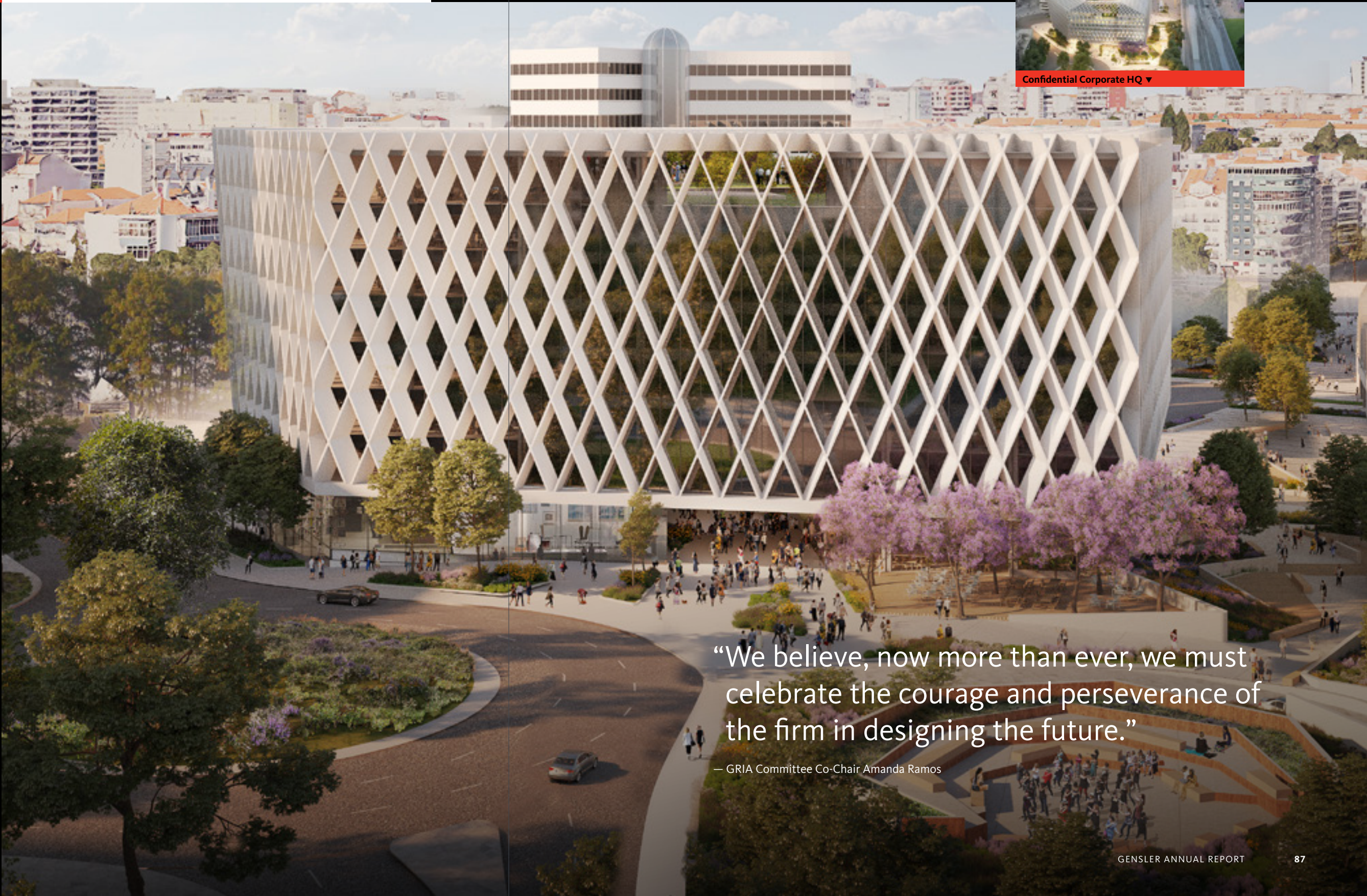
WMP
- Scalability Winner

STACKO
- Applicability Winner

555 Collins
- Sustainability Winner

Confidential Corporate HQ
- JURY

Gerry Collins
Johnson & Johnson Supply Chain
- Jessica Newhouse
Hines
- Dr. Anne Wiese
APAC Real Estate Management, BMW



“We believe, now more than ever, we must celebrate the courage and perseverance of the firm in designing the future.”

— GRIA Committee Co-Chair Amanda Ramos

THANK YOU TO OUR CLIENTS



Gensler Raleigh, Raleigh, N.C.

3,290
TOTAL CURRENT GENSLER
CLIENTS, ACROSS EVERY
MARKET SECTOR AND
AROUND THE WORLD.

2K Games
2U
3 Arts Entertainment
3M
7-Eleven
11 East Partners LLC
92nd Street Y
99 Sudbury
The 601w Companies
The 614 Company
1199SEIU National Benefit Fund
1199SEIU United Healthcare Workers East
1899 Hospitality
2033 Higher Education Development
Foundation

A

A Place Called Home
A&I Development
AAA
AB InBev
AB Tetra Pak
AbbVie
Abercrombie & Fitch
Abiso Development
Academy of Motion Picture Arts and
Sciences
Acadian Asset Management
Accenture
Accesso Partners
AccorHotels
Accuro
ACLU
Actelion
Activate
Activision
Acton Academy
Acumen Development Partners
Adam Corporation
The Adecco Group
Adelphi University
adidas Group
Adient
Adler Realty Investments, Inc.
Adobe
ADP
Advantage Group International
Advantage Solutions
Adventist HealthCare
Advisor Group
AEC Networks
AECOM Hunt
AEG Staples Center and Microsoft Theater
Aegon Asset Management
Aeris
AEW Capital Management
AEye
Affinity Credit Union
AFIAA
Afiniti
AFLAC
AGC Equity Partners
Agencia de Cooperación Alemana para el
Desarrollo (GIZ)
Agilent
AHC + Hospitality
Aichi Prefecture
AIG
AimLoan
Air Canada
Air France
Air Liquide
Air New Zealand
AJ Capital Partners
AJ Wealth
AKDO

Akerman
AKF
Akin Gump Strauss Hauer & Feld LLP
Akridge
Al Ahly Sabbour
Al Khozama Management Company
Alamo Drafthouse
Alchemy Properties
Alduwaliya Asset Management
Alembic Real Estate
Alexander & Baldwin
Alexandria Real Estate Equities
alfa
Alghanim Industries
Alibaba Group
Align Real Estate
Alion Science & Technology
Alkami Technology
Allegis Group
Allen & Company
Allen & Overy
Allen Matkins
Allergan
The Alliance Center
Alliance Residential Company
AllianceBernstein L.P.
Alliant Credit Union
Allied Partners
Allied Properties REIT
AllSpire Health Partners
Alma Agency
Alpine Investments
ALPISTE
Altas
Altar'd State
AltaSea
Altus Realty
Alzheimer's Association
AMD
Amegy Bank
American Airlines
American Assets Trust
American College of Cardiology
American Educational Research Association
American Express
American Family Housing
American Kennel Club
American Physical Therapy Association
American Realty Advisors
American Realty Project Management
American Red Cross
American Water
Americaneagle.com
AmerisourceBergen
Amerlux Lighting
Amherst Holdings
Amini LLC
Amiri
Amtrak
AmWINS Group, Inc.
Anadarko Petroleum Corporation
Analog Devices
Analysis Group
Anchor Health Properties
Ancorian
Angelo Gordon
Anhui Land
Ann & Robert H. Lurie Children's Hospital
of Chicago
Ann Inc.
Anschutz Corporation
Antares Pharma
Antelope Valley College
Anthem, Inc.
Anthos Capital
Aon
Apogee Lighting

Apollo Global Management
Apple
Appleton Partners
Aptean
Aramark
Arbonne
Arca Continental Coca Cola Southwest
Beverages
Arcadia Management Group
Arcadia Power
Archdiocese of New York
Archrock
Arcis Golf
Arcos Dorados
Arent Fox LLP
Ares Management
Argent Ventures
Argo Estrategia
Argonne National Laboratory
The Argyle League
Aristotle
Arizona College
Arizona Coyotes
Arizona Department of Administration
Arizona State University
ARK Group
Arktura
Arper
Arrowstreet Capital
Artegrande
Artemide
Arthur Chapman Kettering Smetak & Pikala,
P.A.
Artisan Realty Advisors
Arts & Science Council
ASA Tiles Group
Asana
ASB Real Estate Investments
Ascend Public Charter Schools
Ascendas-Singbridge
ASG Equities
Ashkenazy Acquisition Corporation
Asian Development Bank
Aspen Dental
Aspen Properties
Aspen Skiing Company
AstraZeneca
AT&T
Athal Capital Group
The Athens Group
Atlantic Health System
Atlas Stark
Atlas
Atrium Health
Auburn University
Auckland Airport
Audubon Corkscrew Swamp Sanctuary
Aurora Capital Associates
Austin Community College
Austin FC
Austin Film Society
Austin-Bergstrom International Airport
Australian Football League
Auto Insurance Specialists
Auto-Owners Insurance
Autograph Collection Hotels
AutoMercado
AvalonBay Communities
Avery Holding
AVENIR GLOBAL
Avenues: The World School
Avison Young
Avnet, Inc.
Away
AXA XL
Axis Communications

B

b8ta
BAC Credomatic
Bacardi
BAE Systems
Bagmane Developers
Bahamas Environmental Group
Baird
Baker Botts
Baker McKenzie
BakerRipley
BALA
Balenciaga
Ballard Spahr LLP
Ballast Nedam
Ballmer Group
Baltimore Metropolitan Council
Balyasny Asset Management L.P.
Banc of California
Bancap Investment Group
Banco de Credito e Inversiones
Bandwidth
Banfield Pet Hospital
Bank of Hainan Co., Ltd.
Bank OZK
Banyan Street Capital
Barclays
Bard College at Simon's Rock
Bardavon Health Innovations
Bareeq al Retaj Real Estate Services W.L.L.
Baring Private Equity Asia
Barker Pacific Group
Barnes & Thornburg
Bartell Hotels
Bartlit Beck Herman Palenchar & Scott LLP
Barton Malow
The BASE
BASF Corporation
Bay West Development
Bayer
BBB Shoes & Boots
BBVA
BDO
Beach Capital Management LLC
Beach City Capital
Beacon Capital Partners
Beacon Partners
Beam Suntory
Bedrock Detroit
Bedrosians
Beiersdorf
Beijing Building Materials Group
Beijing ByteDance Technology
Beijing Heyu Real Estate
Beijing International Club Building
Beijing Meritus Properties Ltd.
Beijing Qianjing Real Estate
Belen Regional Airport
Bellarmine University
Bellwether Financial Group
Benjamin Moore
Bergen Family Center
Berger Holdings
Berkeley Group
Bernstein Companies
Bessemer Trust
Best Buy
BetCris
Beveridge & Diamond, PC
Beverly Wilshire Investment Company
Bexar County, TX
BH Luxury Residences, LLC
BHP
Big Brothers Big Sisters of the Greater
Twin Cities
Big East Conference

10

OF THE TOP 10 TECHNOLOGY COMPANIES GLOBALLY ARE GENSLER CLIENTS.

Billingsley
Binswanger
Biola University
BioLabs
BioMarin
BioMed Realty
BIT Acuario Mexico
Bitexco Group
Blackboard Inc.
Black & Veatch Corporation
Black Creek Group
Black Forest Ventures
Black Oak Development Group
BlackRock
The Blackstone Group
Blank Rome
Blatteis & Schnur
Blinn College
BlitzLake Partners
Block Real Estate Services LLC
Bloom Energy
Bloomingdale's
The Blue Bird Circle
Blue Cross Blue Shield of Arizona
Blue Meridian Partners
Blue Moon Brewery
Blue Shield Of California
Blue Star Development
BlueCross BlueShield Association
BlueSnap
BMC Software
BMI
BMO Financial Group
BNP Associates, Inc
BNP Paribas
BNY Mellon
Boardwalk Auto Group
Bobrick
Boeing
Bojangles
Bolon
Bolton Atlanta
Bond Companies
Booking.com
Booz Allen Hamilton Inc.
BorgWarner
Bosa Properties
Bose
Bosscat
Boston Celtics
Boston Center for the Arts
Boston Consulting Group
Boston Partners
Boston Private Bank & Trust Company
Boston Properties
Boston Scientific
Bota Bota, spa-sur-leau
Boxer Capital, LLC
Boy Scouts of America
Boyle Investment Company
Boylston Properties
Boyer Capital
Boys & Girls Clubs of Collin County
BP
BPM
BPM Associates
BPOC
BPW Investments
Bradley Arant Boult Cummings LLP
Brand USA
Brandeis University
Brasa Capital Management
Brasfield & Gorrie
The Brattle Group
Brause Realty
Brevet Capital Management
Brex

Bridge Development Partners
Bright Horizons Family Solutions
Bringsol SCI
Bristol-Myers Squibb
British American Tobacco
British Council for Offices
British Land
BRITT
Broadcom
Broccolini
The Broe Group
Brooke Rege Corporation
Brookfield Global Asset Management
Brookfield Properties
Brookfield Property Partners
Brookhaven National Laboratory
The Brookhollow Group
Brooklyn Public Library
Brother International Corporation
Brown & Connery, LLP
Bruntwood
Bryan Cave Leighton Paisner LLP
BSE Global
The Buccini/Pollin Group
Buch Construction
Buckeye Properties
Buffalo Bayou Partnership
Bühler
Building and Land Technology
Bulo
Bupa
Burberry
Burlington International Airport
Burnham Ward Properties
Burns & Levinson LLP
Burr Computer Environments, Inc.
Burrito Beach
BVLGARI
BYD

C
C40 Cities Climate Leadership Group
C.A. Rickert & Associates Inc
C.W. Driver
Cabo Paradise, LLC
Cadillac
Cadillac Fairview Corporation
Caesars Entertainment Corporation
Cafetal
Cahill Gordon & Reindel LLP
Caliber
California Baptist University
California Commercial Inc.
California Judicial Branch
California Long-Term Care Education Center
California State Polytechnic University, Pomona
California State University, Long Beach
California State University, Northridge
Callon Petroleum Company
Camallergy
CambridgeSeven
Campari
Campbell Hall
Camphor Partners
Canada Goose
Canary Wharf Group plc
Canderel
Cape Cod Five
Cappemini
Capital Airports
Capital Associates
Capital Group
Capital Hall Partners
Capital Land

Capital One
Capital Properties
Capital Retail Properties
Capitol Broadcasting Company
Capitol Hill Village
Caplin & Drysdale, Chartered
Capricorn Investment Group
Capstone Equities
CAPTRUST Financial Advisors
Cargill
Cargo
Caribou Industries
Carlton Fields
The Carlyle Group
Carmel Partners, Inc.
Carnegie Fabrics
Carolina Panthers
Carondelet High School
Carpenter & Company
Carr Properties
Cartel Properties
Cartier
Caruso Affiliated
Casey Brown Company
Cassidy & Associates
Cast & Crew
Cast Development
Castletop Capital
Cate School
Catellus
Caterpillar
Catholic Charities
Cavender Auto Group
Cawley Partners
Caydon Property Group
Cazador Properties, LLC
CBC/Radio-Canada
CBRE
CBS Corporation
CCC
CCCC Ocean Investment Holding Company
CCS Building Group
CDK Global
CDVS Properties
CEC Optics Valley
CEDARS-Sinai Medical Center
CEFA
Celgene
Celonis
Celularity
Cengage
Centennial Real Estate
CIM Group
The Center Houston
CenterCal Properties, LCC
CenterPoint Energy
Central Houston Cadillac
Central Japan International Airport
Centro Asset Management
Centro para las Artes Promenade
Cerberus Capital Management
Certified
CGE Real Estate
Chaffey College
Chaffey Joint Union High School District
Chafia Capital Partners
Chaincode Labs
Chamberlain, Hrdlicka, White, Williams & Aughtry
Chanel
Channeldrill Resources Ltd
Chapter 510
The Charles Hotel
Charter Communications
Charter Hall
The Charter High School for Law and Social Justice
Chase Marshall Architects

Chatworth LTD.
Cheergrey Properties
Chelsfield
Chemonics
Cheng Investments
Chesnut Properties
Cheval Collection
Chevron
Chicago Department of Aviation
Chicago Journeymen Plumbers Local Union 130 UA
Chicago Loop Alliance
Chick-fil-A
Chiesa Shahanian & Giantomasi PC
Child Advocates of Fort Bend
Children's Aid
Children's Health
Children's Hospital Colorado Foundation
Children's Hospital of Philadelphia
The Children's Inn at NIH
Children's National Hospital Foundation
Children's National Medical Center
The Children's Foundation
China Everbright Group
China Fengde Movie and TV Copyright Agency
China Fortune Land Development
China International Exhibition Center Group Corporation
China Merchants Group
China Minsheng Bank
China Railway Construction Corporation Limited
China Resources (Holdings) Co., Ltd.
China Resources Land
China Sports Industry Group Co., Ltd.
China Taiping Insurance Group Co.
China Tourism Group
Chongqing Jiangbeizui Central Business District Development and Investment
Chongqing Liangjiang Management Committee
Choreo Group
Christina
Chrysalis
The Church at RB
The Church of St. Paul the Apostle
CIBC
CICC
Cielo Property Group
Copenhagen Institute of Interaction Design
CIM Group
CIMC Group
CINDE
Cisco Systems
Cisneros Real Estate
Cisterra Development
Citgo Petroleum Corp
Citibanamex
CITIC Bank
CITIC Group
Citic Pacific Properties
Citigroup
citizenM
City and County of Denver, CO
City Center Allentown
City Church Houston
City Electric Supply
City National Bank
City of Alexandria, VA
City of Aspen, CO
City of Austin, TX
City of Bangor, ME
City of Bellevue, WA
City of Boston, MA
City of Brampton, Ontario
City of Brea, CA

City of Carlsbad, CA
City of Citrus Heights, CA
City of Dallas, TX
City of Farmers Branch, TX
City of Frisco, TX
City of Hope
City of Lake Elsinore, CA
City of Las Vegas Planning Department
City of Los Angeles Bureau of Engineering
City of Los Angeles Department of Public Works
City of McKinney, TX
City of Mesa, AZ
City of New Orleans, LA
City of Palm Springs, CA
City of Phoenix, AZ
City of Rancho Palos Verdes, CA
City of San Clemente, CA
City of San Diego, CA
City of Santa Ana, CA
City of Sparks, NV
City of Toronto, ON
City of Tulsa, OK
City of West Allis, WI
City Realty Group, Bangkok
City Year
Cityplace Co.
CJ ENM
Clarendon Group
Clariant Corporation
Clarion Partners
Clark Art Institute
Clark Construction Group
Clark County Department of Aviation
Clark County School District
Clay Lacy Aviation
Clayton, Dubilier & Rice, Inc.
Clear Channel Airports
Clear Channel Outdoor
Clear Height Properties
Clemente Development
Cleveland Clinic
Clifford Chance
Clint Reilly
Clise Properties, Inc
County of Forsyth, NC
County of Los Angeles, CA
County of San Diego, CA
County of Santa Barbara, CA
County of Santa Clara, CA
County of Santa Cruz, CA
Cousins Properties
Cove Property Group
Cobal Signs
Cobalt Partners, LLC
The Coca-Cola Company
Cognizant
Colégio Dom Bosco
College of Southern Nevada
College of the Desert
CollegeInvest
Colliers International
The Colonnade Hotel
Colony Capital, Inc.
Columbia College Chicago
Columbia Property Trust
Columbia Tower Club
Columbia University
Columbia University Irving Medical Center
Columbus Realty Partners
Comcast
Comite Center for Precision Medicine
The Commonwealth Fund
Commonwealth of Massachusetts
CommonWealth Partners
Communities in Schools of Central Texas
Community Care of North Carolina
Community College of Denver

Community of Hope
Community Servings
COMPAC
Compass Academy
Compass Group
Compton College
Compuware
Concentric Health Experience
Concessionaria Do Aeroporto Internacional de Florianopolis
Concho Resources Inc.
Concord
Concord Pacific
Conduent
Congregation Beth Yeshurun
Congregation of the Sisters of Charity of the Incarnate Word
Connell Real Estate & Development Co.
Conrad N. Hilton Foundation
Conservation International
Constellation Brands
Construtora el Castillo
Consulate General of Japan
Continental Development Corporation
Continental Realty Corporation
Continental Resources
Continuum Partners, LLC
Convene
Cook County Health
Cooley
Copa Airlines
COPARMEX
Coretrust Capital Partners, LLC
Corferias Bogota
Cornell University
Corning Incorporated
Corporación Lady Lee
Corporate Office Properties Trust
Corporate Realty Development
Cosa Nova Fashions Limited
COSCO Shipping Asset Management
CoStar Group
Coty
Countryside Properties PLC
County of Forsyth, NC
County of Los Angeles, CA
County of San Diego, CA
County of Santa Barbara, CA
County of Santa Clara, CA
County of Santa Cruz, CA
Cousins Properties
Cove Property Group
Covenant House Texas
Coventry Development Corporation
Cowen Group, Inc.
Cowtan & Tout
CP Group
CP Land Company
CPG Hospitality
Craftsmen Industries, Inc.
Craig International
Craig Ranch
Cravath, Swaine & Moore LLP
Creative House
Credibanco
Creo College Prep
Cresa
Crescent Communities LLC
Crescent Heights
Crescent Real Estate
Crestlight Capital
Crestron Electronics
Crocodile Bay Resort
Crosby Street Studios
Crossover Health
Crosspoint Properties
Crowell & Moring

Crown Realty Partners
Crowsnest Properties
Crum & Forster
Cruzan
Crystal City Business Improvement District
CSIG Zao Lin Bay Investment Yizheng Co., Ltd
CTC (Centro de Tecnologia Canavieira)
CtrlS
Culinary Khancepts
Cummins
curbFlow
Cushman & Wakefield
Cynthia Woods Mitchell Pavilion
Cystic Fibrosis Foundation
Cytera Technologies

D
D1 Capital
D+DesignDevelopment
DA LI Development USA, LLC
Daichi Sankyo
Daimler Greater China Ltd.
Dakota County
Dallas Comedy House
Dallas County, TX
Dallas Cowboys
Dallas Fort Worth International Airport
Daltile
Danker & Donohue
Dassault Systèmes
DataBank
Datalogic
Datawatch Systems
DatesWeiser
David Yurman
Davidson Hotels & Resorts
Davies Ward Phillips & Vineberg
Davis & Gilbert LLP
Davis Partners
Davis Polk & Wardwell LLP
Davis Wright Tremaine LLP
Daystar Academy
DBS Bank
de Boule Diamond & Jewelry
Dearborn Capital Group
Debbie Allen Dance Academy
Debevoise & Plimpton
Deerfield Management
Del Mar College
Delaware North
Dell
Deloitte
Delta Air Lines, Inc.
Delta Controls
Dentons
Dentsply Sirona
Denver Beer Co.
Denver Health
Denver International Airport
Dermalogica Inc
Derwent London
Desarrollos Axxis
Design Workshop
The Designory
Detroit Medical Center
Detroit Prep
Deutsche Bank
Dfm
Diageo
DiDi Labs
Dig World Adventure Park
Dimension Data
Dimensional Fund Advisors
DiNapoli Capital Partners
The Dinerstein Companies

Directors Guild of America
DIRTT
Discover
DIT Hotels & Resorts
DivcoWest
División Hotelera-Grupo Agrisal
DJM Capital Partners
DKBInnovative
DL3 Realty
DesignLab Architecture
DLA Piper
DLF Limited
Dodge & Cox Funds
Dolphin Partners
DOM Real State
Dominion Electric
Domtar
DoorDash
Dot to Dot Academy
Douglas Development Corporation
Douglas Emmett
The Dow Chemical Company
Downtown Redevelopment Authority
The Doyle Collection
DPC Companies
DPR Construction
Draper & Kramer
DREAM Charter School
Dream Zones Inmobiliaria
Driftwood Capital
The Druker Company, Ltd.
DSM
DTCC
Duesenberg Investment Company
Duff & Phelps
The Duke Endowment
Duke University
Dun & Bradstreet
Dunhill Development and Construction
DuPont Water Solutions
Durable Capital Partners
The Durst Organization
Duta Anggada Group
DW Partners
Dwight-Englewood School
DWS
Dylan's Candy Bar
Dynata
Dynatrace
DynaVac

E
Eagle County Regional Airport
Earthjustice
The East Cut Community Benefit District
East End Capital
East West Partners
Eastern Millwork
Eastman Chemical Company
Eastridge Pacific Holdings
Eatly
EB Arrow
eBay
Edelman
Edelman Leather
EDENS
Edge Funds
Edward J. Minskoff Equities
EF Education First
EFIRE (Emirates Future Investment Real Estate)
Egon Zehnder
Ehrenkranz Partners
EIG Global Energy Partners
Eiseman Jewels
El Paso Independent School District

22

OF INTERBRAND'S 25
BEST GLOBAL BRANDS ARE
GENSLER CLIENTS.

El Sewedy Industries
Elan Homes, Inc.
Elbadr Commercial Development
Eldorado Resorts, Inc
Eldridge Industries
Electrify America
Electronic Environments
Elements Financial
Elevation Development Group
Elevator City Partners
Eli Lilly and Company
Elior North America
Ellie Mae
Elliott Davis
Ellis Partners
Embassy of the People's Republic of China
in the United States of America
EmblemHealth
EMMES Group of Companies
Empire State Realty Trust
Enbridge
Endeavor Real Estate Group
Enertia Software
Engie
The Engine
Englewood Lab
Eni
Entercom
Enterprise Singapore
Entrada Partners
Envision Digital
Envision Group
EpicGenetics, Inc.
The Episcopal School of Dallas
Epstein Becker & Green, P.C.
EPT Land Communities
EQ Office
Equator Capital Management
Equinix
Equitable Real Estate Partners
Equity Residential
Erich Keller
ESD
ESO
Espresso Americano
Essex Commercial Properties
The Estée Lauder Companies
Etsy
European Patent Office
Evelyn Rubenstein Jewish Community
Center of Houston
Evergrande Group
Everjoy Health Group
Eversheds Sutherland
Everwest
Excel Dryer
Excel Sports Management
Exelon Corporation
EXOS
Expo City
Extell Development
Exterran
ExxonMobil
EY

F
Fabbian
Facebook
Fairfield Geotechnologies
Fairfield Residential
Fairmont Hotels and Resorts
The Fairmont Museum District
Fairplex
The Fallon Company
Fana Group of Companies
Fanatics

FanDuel
Fantoni Group
Far East Group
FarFetch
Faring
Farmers & Merchants Bank
Farpoint
Fast Retailing
Federal Aviation Administration
Federal Home Loan Bank of San Francisco
Federal Realty Investment Trust
Federal Reserve Bank
Federal Reserve Bank of Chicago
Federation of Italian-American
Organizations of Brooklyn, Ltd.
Federation of State Medical Boards
The Feil Organization
Felton Properties Inc.
Fenway Capital Advisors
Ferguson
Fermilab
The Festival Companies
Fidelidade
Fidelity Investments
Financial Street Holdings
Finlay
FINRA
Firebird Pictures
First Advisors, Inc.
First Bancorp
First Bank
First Citizens Bank
First Data Corporation
First Financial Federal Credit Union
First Foundation Inc.
First Gulf
First Midwest Bank
First Unitarian Church of Dallas
First United Bank
Fish & Richardson
Fisher Brothers
Fisher Development Associates
FivePoint
Flagler Health+
Fletcher Jones Auto Group
FlightAware
Florida Ice & Farm Co.
FlyawayHomes
FM Global
Focal Point
Focus Development
Foley & Lardner LLP
Foliepop
Forcepoint
Ford
Ford Foundation Center for Social Justice
Forest City
Forge Development Partners
FormanWatkins
Forme Development
Fort Bend ISD
Fortis Property Group
Fortress Investment Group
Foster LLP
Fosterlane Management Inc.
Fosun
The Foulger-Pratt Companies
Foundation Medicine
Four Corners Regional Airport
Fox Corporation
Foxhall Resort
Foyston, Gordon & Payne Inc.
Francis Parker School
Frankfurt Kurnit Klein & Selz
Frasers Property
FREO Group
Fresenius Medical Care

Freshfields Bruckhaus Deringer LLP
Fried, Frank, Harris, Shriver & Jacobson LLP
The Friedkin Group
Friends for Life
The Friendship Foundation
Frisco Economic Development Corporation
Front Burner Restaurants
Frost Brown Todd
Fry Reglet
FTI Consulting
Fuji Pacific Music
Fujitsu
The Future University in Egypt

G
G2 Capital Development
G-Research
Gaedeke Group
Gafcon
Gafisa
Gammon Construction
Gap Inc.
Garnier & Garnier
Garrett Leather
Gateway Community Church
GateWay Community College
Gateway Property Group
Gazit Horizons
GBA Associates LP
GCM Grosvenor
Gemdale Group
Gemini
Gen Re
Gencom
General Dynamics Information Technology
General Dynamics Mission Systems
General Electric
General Motors Company
Genmab
Genpact
Gentor
Gentry Estates
Genzon
Geode Capital Management
George Comfort & Sons
The Georgetown Company
Georgetown Day School
Georgia Technology Authority
Georgia World Congress Center Authority
Geosyntec
Getaround
GFL Environmental
Gianni
Gibson Dunn
Giga Hong Kong
Gilbane
GILD Company
Gilmore Associates
Girl Scouts of Southwest Texas
GitHub
Give Merit
GL Homes
Glacier Global Partners
GlaxoSmithKline
Glenstar
Global Aerospace
Global Alliance Realty Co., Ltd.
Global Furniture Group
GLP
Glumac
GMM Grammy Public Company Limited
Go High Fund
Goddard Investment Group, LLC
Godrej & Boyce Mfg. Co. Ltd.
GoExpedi
Golden Entertainment

Golden State Warriors
Golden West College
GoldenTree Asset Management
Goldman Copeland
Goode Company
Goodwill of Greater Washington
Goodwin Procter LLP
Google
GPI Companies
Grainger
GRAMMY Museum
Grand Central Terminal
Grande Cheese Company
Granite Properties
Grant Tani Barash & Altman
Grant Thornton
GrayStreet Partners
Great Hill Partners
Great Point Partners
Great Wolf Resorts
Greater London Authority
Greater Toronto Airports Authority
Greatland Realty Partners
Green Earth Investments
Green Group Morristown, LLC
Greenberg Glusker
Greenberg Traurig
Greenhill & Co., Inc.
Greenlaw Partners
Greentown China
Greystar
Griffin Capital
Groom Law Group
Grossmont-Cuyamaca Community College
District
Grosvenor Group
Groupe Dallaire
Grubb Ventures
Grupo Falabella
Grupo Matra
Grupo Montecristo
Grupo QT
GTCR
GTIS Partners
Guangxi Investment Group
Guangzhou Huya Information Technology
Co., Ltd.
Guangzhou ROFO Real Estate
Development Co., Ltd
Guangzhou Zhujiang Qiaodu Real Estate
Co., Ltd.
Guardian Life Insurance of America
Gulf Coast Commercial Group
Gulf States Toyota
Gundersen Health System
Gunnison Crested Butte Regional Airport
GurryShark Capital
Gusto
gusto!
Guthy|Renker
GWL Realty Advisors
GZI Group

H
H.I.G. Capital
H&M
H&R Block
Haagen Dazs
Haberman
Hachette Book Group
Hackensack Meridian Health
Go High Fund
Hagerty Garage + Social
Halcon
Hall Prangle & Schoonveld LLC
Hamilton Lane

Hamister Group, LLC
Hana
Hangar 9
Hangzhou Cheng Tou Group Co., Ltd.
Hankey Investment Company
HanseMerkur Versicherungsgruppe
HAP Capital
Harbin Bank
Harbin Zhongyi Cultural Property Co., Ltd.
Harbor East
Hard Rock
Hargray Communications
Harkins Theatres, Inc.
Harley-Davidson
HARMAN International
The Harp Group
Harper & Jones
Harrods
Harsch Investment Properties
Harvard Business School
Harvard-Westlake School
Hatch
Hathaway Dinwiddie
Hatteras Sky
Hawaiian Airlines
Haworth
The HAY Center
Haynes and Boone, LLP
Hazens Real Group
HB Reavis
HBC
HBF
HBO
HDR
Health Management Associates
The Health Museum, John P. McGovern
Museum of Health & Medical Science
Healthcare Trust of America, Inc
HealthSun Health Plans
HealthTrust
Hearst
HeartFlow Japan
Heartland LLC
Heidrick & Struggles
HelloFresh
Henderson Land Development
Hengrui Pharmaceuticals
Hennepin County, MN
Henry Ford Health System
Hensel Phelps
Herbalife
Heritage Bank Limited
Heritage Equity Partners
Heritage Hotels & Resorts, Inc.
Heritage Properties, Inc.
Hermès
Hermes Properties Ltd
Herrick Feinstein LLP
Hexagon PPM
HGGC
HHH Properties Corp
Hi Tech Motorcars
Hi-Tech Realty, LLC
Hibernia REIT
Hicks Ventures
Highgate Hotels
Highland Fairview
Highmark Advisors
Hilco Redevelopment Partners
Hillcrest Country Club
Hilti
Hilton Americas Houston
Hines
Hitachi
HITT
HMI Capital
Hoag Memorial Hospital Presbyterian

Hobbs Brook Management LLC
Hoffman & Associates
Hogan Lovells
Holder Construction
Holiday Inn
Holland & Knight
Holland Casino
Hollister Co.
Holocene Advisors, LP
Holt Renfrew
Holthouse Carlin & Van Tright LLP
Homeless Action Center
Homestead Smart Health Plans
Hon Kwok Land Investment
Honda Center
Honey
Honeywell
The Hong Kong University of Science and
Technology
Hongkun Group
Hongshi Holding Group
HongYi Group
Hope City
Hopkins & Hawley
Horseshoe Bend Holdings, LLC
Hospital Metropolitano
Hospital of the University of Pennsylvania
Hospitality Design Group
Host Hotels & Resorts, Inc.
Hotchkis & Wiley
Hotel Equities
Hotel Erwin
Houlihan Lokey
House of Blues
Houston First Corporation
Houston Maritime Education Center and
Museum
The Howard Hughes Corporation
HP Investors
HR&A Advisors
HRI properties
HSBC
Huafa Group
Hubbard Radio
Hubei Real Estate Investment Group Co.,
Ltd.
Hudson Group
Hudson Pacific Properties
Hudson River Trading
Hughes Hubbard & Reed LLP
HUGO BOSS
Hulic Co., Ltd.
Hunt Companies
Hunt Consolidated, Inc.
Hunter Properties
Hunton Andrews Kurth LLP
Huselton, Morgan, and Maultsby
Hyatt Hotels Corporation
Hyundai Capital
Hywow Resorts Group

I
i2Systems
i3 Interests
IAT Insurance Group
IBM
Icahn School of Medicine at Mount Sinai
ICM Asset Management
IDS Real Estate Group
IFCO Systems Worldwide
IHS Markit
IDA
Illinois Institute of Technology
Illinois State University
IM Properties
IMAX Corporation

IMEG
Incipio Group
Indiana Farm Bureau
Indiana University Health
Industrial Economics, Incorporated
INFILL Planning & Development
InfoVision
Infrastructure Ontario
ING
INMOBIC
InnerHaven Management Company
Inova Health System
Insight Enterprises
Insight Investments, LLC
Insight Software
Inspire Brands
Instituto Tecnológico y de Estudios
Superiores de Monterrey
Intelsat
Intercontinental Exchange
InterContinental Hotels Group
Interface
Interior Design Continuing Education
Council (IDCEC)
International Center of Photography
International Council of Shopping Centers
International Far Eastern Leasing Co., Ltd
International Monetary Fund (IMF)
International Parking Design
Interpublic Group
inTerra
Intuit
Invesco
Investa
IOC Project Partners
Iona College
iPark
iQ Office Suites
IQHQ
IQVIA
Iron Mountain
Irsa
The Irvine Company
Irvine Company Retail Properties
Irvine Valley College
Isa Realty Group, LLC
It Cosmetics
Itaú
ITC Limited
Itochu Corporation
ITV
Ivy Realty
IWE Integrated Workplace Environments
International
IWG plc

J
J. Paul Getty Trust
J.C. Flowers & Co.
Jabil
The Jackie Robinson Foundation
Jackson Lewis
Jackson Walker
Jackson-Shaw
Jacob White Construction
Jacobs Center for Neighborhood Innovation
Jacobs Levy Equity Management
James Wood Auto Group
Janssen Pharmaceuticals
Japan Airlines
Japan Tobacco
Jardine Matheson Limited
Jay Paul Company
JBG SMITH
JDM Partners
JE Dunn Construction

Jeff Brown Yachts
Jefferson Bank
JEMB Realty
Jeni's Splendid Ice Creams
Jenner & Block
JetBlue Airways Corporation
Jewish Family Service
Jewish Federation of Northern New Jersey
JEWISHcolorado
Jiangong Real Estate
Jim Norton Chevrolet
Jindazhou Real Estate
JKA
JLABS - Johnson & Johnson Innovation LLC
JLL
JMB Realty Corporation
JNK Properties
The John Buck Company
John Lewis Partnership
John Wayne Airport, Orange County
Johns Hopkins University
Johnson & Johnson
Johnson & Lindley, LLC
Johnson Controls
Johnson Downie
Jonathan's The Rub
Jones Day
Jordan Perlmutter & Co.
JP DiNapoli Companies Inc.
JPMorgan Chase & Co.
JS Western
JSB Development
The Juilliard School
Junior Achievement
Juvenile Diabetes Research Foundation
JW Marriott

K
K2 Consultancy
Kagan Cellars
Kaiser Permanente
Kam Sang Company
Kamehameha Schools
Kane Realty Corporation
The Karahan Companies
Karch Brewery
Karl Storz Inc.
Katayama Holdings K.K.
Katten
Kaver Dental
KBM-Hogue
KBS Realty Advisors
KDW
Kearny Real Estate Company
Keck Medicine of USC
Keeneland Association, Inc.
Keith & Ramirez
Kelemen Company
Kelley Drye
Kellogg's
Kelly Slater Wave Co.
Kennedy Sutherland
Kennedy Wilson
Kent State University
Kentro Group
The Kessler Collection Grand Bohemian
Hotels
Keurig Dr Pepper
Kevric Real Estate Corporation Inc.
Keybridge
Keyes Automotive Group
Keystone Property Group
KHP Capital Partners
KI
Kilroy Realty Corporation
Kin + Carta

90%

OVER 90% OF OUR WORK
COMES FROM REPEAT CLIENTS.

129

COUNTRIES WHERE GENSLER HAS WORKED TO DATE.

Kinder Morgan
King & Spalding LLP
King Abdullah Financial District
Kingold Group
KingSett Capital
Kintetsu Enterprises Company of America
KIPP
Kirkland & Ellis
Kite, a Gilead Company
Kittredge Properties
Kleinberg, Kaplan, Wolff & Cohen, P.C.
Klyde Warren Park
KMW Communities
KNGDM Group
Knight Foundation
Knoll
Knollwood Investment Advisory
Knoxville's Community Development Corporation
Koelbel and Company
Kohler
Kojaian
Komatsu Wall
Konrad Group
The KOR Group
Korn Ferry
KPMG
KPRS Construction
Kramer Levin
Krause Group, Ltd.
KSBJ
KT Builders
Kuntai Group
KVS Title
Kylli

L
L Brands
L3Harris
L.E.K. Consulting
L.L.Bean
L'Oréal
L&L Holding
L&M Architectural Signs
La Maison du Chocolat
LabCorp
Lakhi Group
Lamar University
Lamex
Lance-Kashian & Company
Land Rover of Dallas
Landmark Development
Landmark Realty Corp
Landmark Sabbour
Landry's
Landsec
Lane Partners
Lane Powell
Langan
Langley Investment Partners
Lankford & Associates, Inc.
Lantower Residential
Larco Hospitality
Las Vegas Monorail Company
Last Spike Brewery
LatAm Logistic Properties
Laughlin Constable
Laurence School
Laurentian Bank of Canada
Lauricella Land Company
Lawrence Livermore National Security LLC
Lazard
LBA Realty
LBG Real Estate Companies, LLC
Le Labo Fragrances
LeBeau Realty

Lee Hecht Harrison
Leech Lake Band of Ojibwe
LEEP Dual Language Academy Charter School
LeFrak
Legacy Investing
Legacy Restaurants
LegalZoom
Legg Mason
Lei Shing Hong
Leidos
LEIMAGENCORP S.A.
Lendlease
Lennar
Leona M. and Harry B. Helmsley Charitable Trust
Leopardo
Lerner Enterprises
Level 10 Construction
LEVEL Project Management
Lever
Lewis Family Foundation
LG Development Group
LGE Design Build
LHC Group
Liberty Mutual Insurance
Liberty Que Huong Hotel (Vietnam)
Lids Sports Group
Liga Deportiva Alajuelense
Light
Lightstone Group
Lincoln Financial Group
Lincoln Harris
Lincoln Property Company
Lincoln Ventures
Lindsay Goldberg
Linkedin
Linklaters
Linyi Huayang Import & Export Co., Ltd.
Lions Veldt
Liquid IV
Little Gem Resorts
Littler
Live Nation
Living Space Housing
LIVWRK
LIXIL
Lockton Companies
Loews Hotels
Loftus Robinson
LOLA Coffee Bar
London & Regional Panama (Panamá Pacífico)
London + Regional Properties
Lone Star College System
Long's Jewelers
Longfellow Real Estate Partners
Loomis, Sayles & Company
Los Alamos National Laboratory
Los Altos Community Investments
Los Angeles Chargers
Los Angeles County Department of Health Services
Los Angeles County Department of Mental Health
Los Angeles County Department of Public Works
Los Angeles Football Club
Los Angeles Public Library
Los Angeles World Airports
Lou Hanwell Limited
Loughborough University
Louisiana State University System
Louisville City FC
Lovett Commercial
LOWE
Lowe's
LoyaltyOne

Loyola Marymount University
LPC West
LPL Financial
Lubert-Adler
Lucid Motors
Lucifer Lighting Company
Luen Mei
lululemon athletica
Lumenwerx
Luneng Group
Lunkad Realty
Lupa Systems
Luther Seminary
Lutron Electronics Co., Inc.
Luxo
Lynch Mykins Structural Engineers
LYND
Lynn University
Lyon Living

M
M-M Properties
M3 Capital Partners
M3M India
M56 Group
M.H. Alshaya Co.
M.M.LaFleur
M/C Partners
M/I Homes
M&T Bank
Maars Living Walls
Mabane
Macerich
Mack Real Estate Development
Mackey & Associates, PLLC
Macklowe Properties
Macquarie Group
Macy's, Inc.
Madison Marquette
The Madison Square Garden Company
Madison Street Books
Maharam
MAINSRING
Mainstreet Capital Partners
Majestic Rayon & Cudge Realty LLC
Majestic Realty Co.
Major League Baseball
MakeOffices
Mallplaza
Manaqueul Company Limited
ManaWell
Manchester Capital Management, LLC
Manchester Financial Group
Mango Tree Markets, LLC
The Manhasset Bay Group Inc.
Manhattan Beach Unified School District
Manulife
Maple Leaf Sports & Entertainment
Maplewood Healthcare
Mar Ventures, Inc.
Marand Builders
Marbles Kids Museum
The Marcel Group
The Marchbanks Company
Marcus Partners
Mark Richey Woodworking
Mark S. Jordan Companies
Marlin Equity Partners
Mars
Mars Wrigley
Marsh & McLennan Companies
Marshall Property & Development
Martin Marietta
Maruwa
Maryland Institute College of Art
The Maryland-National Capital Park and

Planning Commission
Masri Investment Corporation
Mass Equities, Inc.
Mass General Brigham Health
Massachusetts Institute of Technology
Massport
MasterCard
Matco Investments
MathWorks
Matter
Matter Real Estate Group
Milan Capital Management
Milbank
Millennium Hotels and Resorts
Millennium Partners
Miller Blaker
Miller Commercial Properties, LLC
Miller Global Properties
Mimecast
Minneapolis Community & Technical College
Minneapolis Convention Center
Mintz, Levin, Cohn, Ferris, Glovsky and Popeo, P.C.
MiraCosta College
Mirvac
The Mission Companies
The Mitchell Family of Stores
Mitsubishi Estate Co., Ltd.
Mitsui Fudosan America, Inc.
Mizuho Bank
Mizuho Real Estate Management
MLF Company, Inc.
MLP Ventures
Moda Midstream
Moda Operandi
Modernizing Medicine
ModySpace
Moelis & Company
Mohawk Group
The Moinian Group
The Molasky Group of Companies
Monday Properties
Mercedes-Benz
Merchandise Mart Properties, Inc.
Merck
Mercury Systems
Mercy Housing
Mercy Medical Center
Meredith Management
The Meridian Group
Merit Energy
Merlone Geier Partners
Mermet
Merrill
Merrithew
Mesofoods
MetLife
Metricon Homes
Metro
METRO
Metro Blooms
Metro Loft
Metropolitan Hospitality Group
Metropolitan Pier and Exposition Authority
Metropolitan Transportation Authority
Metzler Realty Advisors
The MFA Companies
MG+M the Law Firm
MGC Law
MGE UTC
MGM Resorts International
Michael Kors
Michael's Restaurant
Micron
Microsoft
Mid-America Real Estate Group
Middle East Institute
Midgley Tecnica

Midland Memorial Foundation
MidPlaza Holding
Midtown Equities
Midway Companies
Midway Partnership
Midwest Property Group, Ltd.
Midwood Investment & Development
Mighty Buildings
Mikimoto
Milam Real Estate Capital
Milan Capital Management
Milbank
Millennium Hotels and Resorts
Millennium Partners
Miller Blaker
Miller Commercial Properties, LLC
Miller Global Properties
Mimecast
Minneapolis Community & Technical College
Minneapolis Convention Center
Mintz, Levin, Cohn, Ferris, Glovsky and Popeo, P.C.
MiraCosta College
Mirvac
The Mission Companies
The Mitchell Family of Stores
Mitsubishi Estate Co., Ltd.
Mitsui Fudosan America, Inc.
Mizuho Bank
Mizuho Real Estate Management
MLF Company, Inc.
MLP Ventures
Moda Midstream
Moda Operandi
Modernizing Medicine
ModySpace
Moelis & Company
Mohawk Group
The Moinian Group
The Molasky Group of Companies
Monday Properties
Mercedes-Benz
Merchandise Mart Properties, Inc.
Merck
Mercury Systems
Mercy Housing
Mercy Medical Center
Meredith Management
The Meridian Group
Merit Energy
Merlone Geier Partners
Mermet
Merrill
Merrithew
Mesofoods
MetLife
Metricon Homes
Metro
METRO
Metro Blooms
Metro Loft
Metropolitan Hospitality Group
Metropolitan Pier and Exposition Authority
Metropolitan Transportation Authority
Metzler Realty Advisors
The MFA Companies
MG+M the Law Firm
MGC Law
MGE UTC
MGM Resorts International
Michael Kors
Michael's Restaurant
Micron
Microsoft
Mid-America Real Estate Group
Middle East Institute
Midgley Tecnica

N
N26 Bank
NagaCorp Ltd.
NagaWorld
NAI Global
Narita International Airport Corporation
NASA Federal Credit Union
NASA/JPL
Nasdaq, Inc.
Nathan Cummings Foundation
National Air
National Air and Space Intelligence Center
National Association of Broadcasters
National Development
National Institutes of Health
NATIONAL Public Relations
National Restaurant Association
National University Health System
Nationwide Children's Hospital
Native American Bank
Navy Federal Credit Union
Navy Pier
NBCUniversal
NBP Capital
NCR
Neal Gerber Eisenberg
Neiman Marcus
NEOM
Nestlé
Net32
NetApp
Netflix
Netspend
Network Capital
Neuberger Berman
Neurogene
Nevada County Community Library
New Development Bank
New England Dental Group
New England Development
New Giza
New Jersey Hall of Fame
New Jersey Performing Arts Center
New Museum
New Oriental Education Group
New Orleans Saints
The New School
The New Traditionalists
New York Athletic Club
New York County Lawyers Association
New York Hotel Trades Council
New York Institute of Technology
New York Islanders Hockey Club
New York Mets
New York Power Authority
New York Road Runners
New York State Office of the Attorney General
The New York Times
The New York Trucking & Delivery Association
New York University
Newland Real Estate Group
Newmark Knight Frank
Newton-Wellesley Hospital
NewYork-Presbyterian Hospital
Nexen
Next Century Partners, LLC
Ngan Mook Holdings Corporation
Nhat Thang VNT 6 Joint Stock Company
NHN
Niantic
Nike
Nissan
Nixon Peabody
No Barriers
Nokia

Nolan Law Group
Nomura
Nor'wood Development Group
NORCAL Group
Nordstrom
Norfolk City Economic Development Authority
Norges Bank Investment Management
Norrfoss
North American Client Services, Inc.
North Carolina Football Club
North Carolina Joint Underwriting Association
North Dallas Bank & Trust Co.
North River Company
Northeastern University
Northern Illinois University
Northern Railway Park Co. Ltd.
Northpond Partners
Northrop Grumman Corporation
Northwestern Medicine
Northwestern University
Northwood Investors
Northwood Ravin
Northwood Retail
Norton Rose Fulbright
NortonLifeLock
Nova Partners Inc.
Nova Scotia Health Authority
Novak Construction Company
Novartis
Novatek Gas & Power Asia
NR International
NS8
NSS Labs
NTT
Nucraft
Number Project
Nut Tree Capital Management
Nuveen
NVIDIA
NYCB LIVE, home of the Nassau Veterans Memorial Coliseum
NYU Langone Health
NYX Cosmetics

O
O'Connor Capital Partners
O'Melveny
O'Sullivan Estate Lawyers
Oak Park Country Club
Oakland Athletics
Oakland Metropolitan Chamber of Commerce
OakPoint Real Estate
Oakville Green Development
Oasis West Realty
Oberoi Realty
Ocean West
Oceánica de Seguros
OCP Research, LLC
Office of the Attorney General for the District of Columbia
Office of the Comptroller of the Currency
OhioHealth
Okamura Corporation
Oklo Inc.
Okura Nikko Hotel Management
Olayan Group
Old Floor
The Old Globe
Oliver Hotel Group, LLC
Oliver Smith Realty
OliverMcMillan
Olnick Organization
Olympia Development of Michigan

Omni Hotels & Resorts
Omnicom Group
Omnictracs
OneAmerica
Onelin Capital Corporation
Onex
Ontario Teachers' Pension Plan
Onyx Equities, LLC
Opain S.A.
Open English
Open-Rebees
Opicoil
Oppidan
Opus Bank
Oracle
Orange Coast College
Orange County Employees Retirement System
Orange County Public Works
Orange Investments
Oregon State University
Original Greenhill LLC
ORIX Corporation
ORIX Real Estate Corporation
Orleans Seafood Kitchen
Osborne + Co
Osborne Properties and Investment Ltd
OSF HealthCare
Otis Elevator Corp
OTO Development
Otto Bremer Foundation
OUE Limited
Oui Eats
Owl Rock Capital
Oxford Properties Group
Oxy

P
P2 Energy Solutions
P&G
Pace Management
Pacer Partners
Pachulski Stang Ziehl & Jones LLP
Pacific Builders
Pacific Life
Pacific Retail Capital Partners
The Padron Group, LLC
PAIGE
Palm Springs International Airport
Panasonic Corporation
Paper Excellence
Pappas Restaurants
Paragon
Paragon Biosciences
Parallel Capital Partners
Parallon
Paramount Group, Inc.
Paramount Pictures
Parker Poe Adams & Bernstein LLP
Parking Vault
Parkview International, Inc.
Parkway Corporation
Parkway Property Investments, LLC
Parmer Innovation Centers
Pat Lobb Toyota of McKinney
Patelco Credit Union
Pathak Properties Limited
Pathway Capital Management
Patreon
Patrinely Group
Patterson Belknap Webb & Tyler LLP
Paul Hastings
PaulWeiss
Payden & Rygel
pba
Pearl Hospitality

10

OF THE 10 HIGHEST-GROSSING
LAW FIRMS GLOBALLY ARE
GENSLER CLIENTS.

Pearlstone Partners
Pebb Capital
Peckar & Abramson
PEG Companies
Pellas Development Group
Pembroke Real Estate
PenChecks
Penn National Gaming
Penn Station Partners LLC
The Pennsylvania State University
Pennybacker Capital
Penobscot Management, LLC
Pepper Hamilton
Peregrine Group
Peregrine Realty Partners
Perfect World
Perimeter Development Corporation
Perkins Coie
Perspecta Engineering Inc.
The Peterson Companies
The Pew Charitable Trusts
PGi
Pharo Management
PhaseNext Hospitality
Phelps Dunbar
Philadelphia Eagles
Philip Morris International
Phillips India
Phillips 66
Phoenix Diversified Group
Physician Health Partners
Piazza Hospitality
Picasso Lighting
Piedmont Office Realty Trust, Inc.
Pillsbury Winthrop Shaw Pittman LLP
PIMCO
The Pinkard Group
Pipeline
Piper Sandler Companies
Pivotal Group
Pizza Hut International
The Pizzuti Companies
PKF O'Connor Davies
The Plaid Penguin
Plains All American
Plan B Media
Planet Fitness
The Plasencia Group
Platform
The Platform Group
Playbook Management Company
Plaza Premium Group
Pluto Partners
PMC Property Group
PNC Financial Services Group
Poder Judicial Costa Rica
Point B
Poly
Poly Group
Pomona College
Port Coronado Associates, LLC
Portafolio
Portalia
Porter Hedges LLP
Porterville College
Portman Holdings
POSSIBLE
Postmates
PowerSecure International, Inc
Practising Law Institute
Preferred Bank
PREIT
Premier
Premier Research
Preotle, Lane & Associates
Presbyterian School of Houston
Presidium

Prezi
PriceSmart, Inc.
Primaris
Primark
Prime West
PrimeSource Building Products
Princeton University
Principal Global Investors
Prism Capital Partners
Pritzker Group
ProAg
PROCOMER
Prodapt Corp
Progressive AE
Project Management Advisors
Promotora Barlovento
Pros Revenue Management
Proskauer Rose LLP
Prospera Hotels, Inc.
Provenance Land
Providence Health & Services
Provident Bank
Proyecta Gestion
Prudential
PSP Investments
PT. LAPI ITB
PUBG Corporation
Puerta Cortes
PulteGroup
Puma
Putnam Investments
PwC
PWC Companies
The Pyramid Center
Pyramid Hotel Group

Q
q2 solutions
QBO
QBP
Qgenda
QIC Global Real Estate
Qiddiya Investment Company
Qingdao Bureau of Housing and
Urban-Rual Development
Qingdao Conson Development
QTS
Quadrangle Development Corp.
QuadReal Property Group
Quadrum Global
Quaker Lane Capital
Quantitative Investment Management
Queens Library
Quinn Automotive Group
Quogue Library
QVC

R
R2 Companies
R.C. Hedreen Company
R.E. Staite Engineering Inc.
Rabina Properties
Radio Flyer
Radler Enterprises
The Raine Group
Rainier Pacific Company
Raleigh-Durham Airport Authority
Ram Realty Services
Ramírez y Asociados
Rappore
Rasa Tower Group
Ray C. Fish Foundation
Raymond Apparel Ltd
RDK Engineers
REAL Impact

Realogy
RealPage
Reata Pharmaceuticals
Rebuilding Together
ReCon Engineering
Recruit Staffing
RED Development LLC
RED Digital Cinema
RED Engineering
Red Oak Investments
REDCO Development LLC
Redemption
RedLeaf Properties
RedSky Capital
Reebok
Reed Smith
Reef Group
Regency Centers
Regency Park Corp.
Related Companies
Related Group Inc
Reliable Properties
ReliaQuest
Relias Learning
Relish Works
Renova Equities
Rent-A-Center
Resort Energy Ventures
Resorts World Las Vegas
Restaurant Brands International
Revera Living
Rexite
Reyes Holdings
RFR
Rice Management Company
Rice University
Richards Watson Gershon
Ridgemont Construction
Righttacs Property
Riley Children's Hospital
Rio Bravo Group
Rising Realty Partners
River Oaks Country Club
RiverRock Real Estate Group
Riverside City College
Riverside Investment & Development
Riverside Resources
RLJ Companies
RMK Management
The RMR Group
RMZ Corp
Robbins Russell
The Robert Green Company
Robeson County, NC
Robins Appleby LLP
Roche
Rock Paper Scissors Collective
Rockbridge
Rockefeller Group
Rocket Properties
Rockpoint Group
Rockrose Development
The Rockwell Museum
Rogerson Capital
Rohde & Schwarz
Roku
Rolls-Royce
Ronald McDonald House Charities
Rongmin Holding Group
Ropes & Gray
Rosen Group
Rosenberg Library
Ross Stores, Inc.
Roswell International Air Center
RoundPoint Mortgage Servicing
Corporation
Route Sixty-Six Ventures

ROW NYC
Rowland Water District
Royal Caribbean International
Royal Institute of British Architects
Royal London Asset Management
Royalty Pharma
RPAI
RPT Properties
RT London
RTW Investments, LP
Rubenstein Partners
Rufty-Peedin Design Builders, LLC
The Rug Company
Rush University Medical Center
Rushmark Properties
Russo Development
Rutan & Tucker, LLP
Rutgers University
RXR Realty
Ryan Companies

S
s2e Technologies
S&P Global
Saban Capital Group
Sabey Corporation
Sabot Development
Safeport Independent Living Facility
Sagegreenlife
Saks Fifth Avenue
SalonCentric
Salzburg Global Seminar
Samaritan's Purse
Samsara
Samsung
San Diego Community College District
San Diego County Regional Airport
Authority
San Diego Gas & Electric
San Diego State University
The San Diego Union-Tribune
San Diego Yacht Club
San Francisco Gay Men's Chorus
San Francisco International Airport
San Francisco Symphony
San Jose International Airport
San Jose State University
Sanofi
Santa Catalina Island Company
Santa Clara County Housing Authority
Santander Bank
Sarah Cannon Cancer Institute
Sares Regis Group
Saris Cycling Group
SAS Institute
Sato Facilities Consultants
Saudi Entertainment Ventures
Saunders Construction
Savanna
Say Sí
Entertainment Group
SBM Offshore
Scape Living Student Accommodation
SCG America
Schiller, DuCanto & Fleck LLP
Schlage
Schlumberger
Schneider
School of the Art Institute of Chicago
Schools of the Sacred Heart San Francisco
Schuchart
Science of Spirituality
SCL Health
Scotiabank
Scotto Properties
SCS Engineers

Sea Breeze Properties
SeaCube Container Leasing
Sean Casey, LLC
Seattle Mariners
Segal NYC Productions
Selfridges
Semptra Energy
Sencorp USA
Sentinel Capital Partners
Sentre
Sephora
Sequoia Capital
Seritage Growth Properties
Server Farm Realty
Service Logic
ServiceNow
ServiceTitan
SERVICIOS AEROPORTUARIOS VIP S.A.
Sewell Automotive
Seyfarth Shaw
SF Motors
Shaanxi Hanhua Industry Group
Shaanxi XiXian Central Business District
Construction and Development Co. Ltd.
Shackelford, Melton, McKinley &
Norton LLP
Shady Grove Fertility
Shakelford, Bowen, McKinley & Norton
Shalom Institute
The Shammas Group
Shanghai Chenhong Real Estate
Development Co., Ltd.
Shanghai Golden Bund Real Estate
Shanghai Huangpu District Land Reserve
Center
Shanghai Jindi Urban Construction &
Development
Shanghai Jing'an Subway Investment
Shanghai Lingang Economic Development
Group Asset Management Co., Ltd.
Shanghai Lingang Technology & Innovation
City Economic Development Co., Ltd.
Shanghai Lujiazui Finance & Trade Zone
Development Co., Ltd.
Shanghai Media Group
Shanghai Pudong Development Bank
Shanghai Pujiang Storage
Shanghai Rongguang Industrial
Shanghai Tower Construction &
Development Co., Ltd.
Shanghai Waigaoqiao Free Trade Zone
Group Co., Ltd
Shanghai Zhangjiang Guo Xin An Real
Estate
Shanghai Zhonghuan Investment and
Development (Group) Co., Ltd.
Shapack Partners
Sharp HealthCare
Shashi Group LLC
Shaw Properties (1997) Pte Ltd
Shawmut Design and Construction
Shell
Shenhua Health Technology
ShenllyWood
Shenzhen Furniture Association
Shenzhen Urban Construction Land
Development Co., Ltd
Shepherd Eco
Sheppard Mullin
Sherwood Equities
Shimao Group
Shiseido
Shook, Hardy & Bacon
SHOP Companies
Shorecrest Project Management Group
Shorenstein
Shriners Hospital for Children

Shunfa Hengye Corporation
Shunfeng Express
Shurooq
SHVO
SI-Centrum Stuttgart
Sidewalk Labs
Sidley Austin LLP
Siemens Gamesa
SignalCraft
Signature Federal Credit Union
Signature Resolution
Siguler Guff
Silicon Labs
Siliconas y Quimicos SAS
Silver Lake
Silverstein Properties
Simon
Simply Good Foods
Simpson Thatcher & Bartlett LLP
Sinclair Broadcast Group
Singtel
Sino-Ocean Group
Sir Robert McAlpine
SIRIUS XM
SITA
SJP Properties
Skandinaviska Enskilda Banken
Skanska
Skid Row Housing Trust
SKS Partners
Skyworks Solutions, Inc.
SL Green
Slate Asset Management
SmartCentres
SMG
Smith + Andersen
Smith Optics
Smith Seckman Reid, Inc.
Smithsonian Institution
Snell & Wilmer
Soapstone United Methodist Church
Sociedad Hotelera Tequendama S.A.
SoFi
Soho House
Solano Community College
Solasto Corporation
Somerset Associates
Songy Highroads
Sonic Automotive
Sonkim Land Coporation
Sonoma State University
Sotetsu Hotel
Sotheby's
The Souferian Group
Sound Agriculture
South African Council of Shopping Centres
South China University of Technology
South Coast Plaza
South Motors Automotive Group
South Orange County Community College
District
Southeastern Pennsylvania Transportation
Authority
Southern California Association of
Governments
Southern California Flower Market
Southside Development Company
Southwest Airlines
Southwestern College
Southwestern Energy
Space Center Houston
Spacestor
Spectrum
Spencer Stuart
The Spice House
Spin Master
Sposito & Asociados

SPP
SPX FLOW, Inc.
Squar Milner
Squint Eyewear
SRG Properties
SRS Distribution
SSC Service Solutions
ST Microelectronics
St. George's School
The St. James
St. Louis Science Center
St. Paul's PACE
Stages Repertory Theatre
Standard Chartered Bank
Standard Industries
Stanley Black & Decker
Stantec
Staples
Starboard Cruise Services
Starbucks
Starwood Capital Group
Starwood Retail Partners
Steadfast Companies
SteelWave
Stellar Management
Steptoe & Johnson LLP
Sterling Bay
Sterling Group
Sterling Project Development
Steve Johnson Development LLC
Steward Health Care System
Stibo Systems
Stinson
Stockdale Capital Partners LLC
Stocker Holdings
The Stone Collection
Stone Source
Stonebridge Associates
Stonebridge Companies
Stormont Hospitality Group LLC
Stradley Ronon
Stratus Development Partners, LLC
Stratus Properties Inc.
Stream Realty Partners
Street Level Investments
Stroh Companies
Stronach Group
Structure Tone
Stryker
Sudberry Properties
Sueba USA Corporation
Sumitomo Corporation of Americas
Summit Capital Group LP
Summit Medical Group / CityMD
Sun Hung Kai Properties Limited
Sunac China
Suncor
Sunnova
Sunroad Enterprises
Sunscope Group of Companies
Sunsho Pharmaceutical Co., Ltd.
Sunstone Hotel Inverstors, Inc.
SunTrust
SUNY Downstate Health Sciences
University
Supermassive Games
Supreme Pet
Surrey Heath Borough Council
Suzhou Liandong Jinchu Industrial Co., Ltd
Suzhou Yuncai Hongyou Industrial Co., Ltd
Suzhou Zhongnan Center Investment
Co. Ltd
SVB Leerink
SWaN & Legend Venture Partners
Sweet 100
Swift Real Estate Partners
The Swig Company

Swire Properties
The Switch
SXSX
Sycamore Tree Capital Partners L.P.
Syd Jerome
Symmetry LLC
Syracuse Regional Airport Authority
Syracuse University
Syska Hennessy Group
Systems, LLC

T
T2 Development - Hospitality
T-Mobile
T. Rowe Price
Tableau
Taconic Investment Partners
Tacos Pacheco
Tad Ware & Company
TAG Restaurants
Taikang Group
Takeda
Tamares
Tamlyn
Tanglewood Property Group
Target
Targetti
Tarrant County College District
Tata Consultancy Services
The Tata Realty Group
Tavistock Development Company
Tavistock Group
Taylor Morrison
TaylorMade Golf Company
Tazz Enterprise
TBI INC
TCW Group Inc
TD Bank Group
The Tech Interactive
TechnipFMC
TechRise
Teladoc Health
Telenor Group
Telos
TELLUS
Tencent
Tennant Company
Tennessee Titans
Terra Holdings
Terracap
Terrapin Investments & Management
Corporation
Terrasset Management Group, LLC
Terumo Corporation
Texas A&M University
Texas Association of Realtors
Texas Christian University
Texas Dow Employees Credit Union
Texas Facilities Commission
Texas Medical Center
Texas Tech University System
TextNow
TGS-NOPEC Geophysical Company
Thakkar Development Group
Thermo Fisher Scientific
Third Way
Thoma Bravo
Thomas H. Lee Partners
Thompson Coburn LLP
Thompson Morris
Thomson Reuters
Thor Equities
Thornton Tomasetti
Thorntree
Thoroughbred Ford
Three Brothers Bakery

8

OF THE TOP 10 HOTELS,
RESTAURANTS, AND
LEISURE COMPANIES ARE
GENSLER CLIENTS.

9

OF THE TOP 10 MOST
INNOVATIVE COMPANIES ARE
GENSLER CLIENTS.

thyssenkrupp
Tianjin Lingang Economic Zone
Tianrun Land Group
Ticketmaster
TIFF
Tiffany & Co.
Tiger Global
TikTok Inc.
Tim Hortons
Timken Museum of Art
Tishman | Hotels | Realty | Real Estate Services
Tishman Speyer
Title Nine
TK Trial
TOCA Football
Toda Corporation
Todomoda/Isadora
Tokio Marine & Nichido Fire Insurance
Tokyu Agency Inc.
Toll Brothers
Tonal
Topa Property Group
Toronto Community Housing
Tortuga Resorts San José
Total
TouchBistro
Tower Holdings Group
Tower Realty Partners, Inc.
Town of Gilbert, AZ
Toyohashi City
Toyota Motor Corporation
Toyota Technical Institute at Chicago
TP ICAP
Trademark Properties
Trademark Property Company
Trahan Architects
Trammell Crow Company
Trans National Group
Transcendental Suites, LLC
Transport for London
Transportation Security Administration
Transwestern
Travis County, TX
Traxys
TRC Capital Partners
Treebo Hotels
Tressler LLP
Tri-State Generation & Transmission Association
Triangle Real Estate Company
Tribune Media Company
Tribute Communities
Trident Partners
TriHealth
Trilantic Capital Partners
Trilliant
Trinity Broadcasting Network
Trinity Capital Advisors
Trinity Partners
Triple Five Worldwide
Triple Flag Mining
Tritium Partners
TriVista
True North Studio
Tsinghua University
TX Company
Tubi
Tucson Airport Authority
Tucson Electric Power
Turnberry
Turnbridge Equities
Turner
Turner & Townsend
Turner Construction Company
Turri Italian Furniture
Tuttle Land Investments

Twilio
Twitch
Two Oak Ventures
Tysons Partnership
tZERO

U
U.S. Agency for International Development
U.S. Army Corps of Engineers
U.S. Department of Commerce
U.S. Department of Defense
U.S. Department of Energy
U.S. Department of Health and Human Services
U.S. Department of Justice
U.S. Department of State
U.S. Department of the Air Force
U.S. Department of the Navy
U.S. Department of Transportation
U.S. Federal Government
U.S. General Services Administration
U.S. Marshals Service
U.S. Venture
U.S.VETS
Uber
Ubisoft
UBS
UC Davis Health
UCB Biosciences, Inc.
Udemy
Ultrapark Development Group
UM
Umbra
Umm Al Qura for Development & Construction Company
Under Armour
UNFI
Unibail-Rodamco-Westfield
Unified Real Estate Development
UniFor
Uniform Advantage
Uniland Development Company
Union Investment Real Estate
Union Pacific Railroad
Union Square Events
Unire Real Estate Group
Unisys
United Airlines
United Palace
United Properties
United Surgical Partners International
United Technologies Corporation
United Therapeutics Corporation
United Urology Group
Unity
Unity Health Care
Universal Fibers
Universal Paragon Corporation
University of Arizona
University of California, Davis
University of California, Irvine
University of California, Los Angeles
University of California, Office of the President
University of California, Riverside
University of California, San Diego
The University of Chicago
University of Delaware
The University of Georgia
University of Hawai'i - West O'ahu
University of Hawai'i at Mānoa
University of Houston System
The University of Illinois at Chicago
The University of Kansas
University of Maryland
University of Massachusetts, Amherst

University of Miami
University of Minnesota
University of Mississippi Medical Center
University of Nevada, Las Vegas
University of New Hampshire
University of North Carolina at Chapel Hill
University of North Carolina School of the Arts
University of North Texas
University of Pennsylvania
University of Pittsburgh
University of San Diego
University of San Francisco
University of South Florida Research Foundation
University of Southern California
University of St. Augustine for Health Sciences
University of Tampa
University of Tasmania
The University of Texas at Austin, Dell Medical School
The University of Texas at San Antonio
The University of Texas Athletics
The University of Texas System
University of Washington
UNLMTD Real Estate
Unum
Upper East development Corp.
Uppercut Media
Urban Atlantic Development
Urban Commons LLC
Urban Land Institute
Urbánica Desarrollos Inmobiliarios
Urbanspace
US Chamber of Commerce
USAA
UVA Health

V
Valley
Vanborton Group
Vanke
Vantage Property Investors
VanTrust Real Estate, LLC
Vattana Properties Ltd
VE Equities, LLC
Veggie Grill
VeggieLution
Velmeir Companies
Venables Bell & Partners
Vequity
Verde Partitions
Verizon
Vertex Pharmaceuticals
Vertigo Group
Vestar Capital Partners
Viasat
View the Space
Village Health Clubs & Spas
VINCI Construction
Vingroup
Vinson & Elkins
Vision Real Estate Partners
Visions Global Empowerment
Visit Tampa Bay
Visiting Nurse Service of New York
Vista Equities Group
Visteon
Vitra
Vodafone
Volkswagen Group of America
Vornado Realty Trust

W
W3
W.E. O'Neil Construction Company
W.P. Carey
Wabash National
Wachtell, Lipton, Rosen & Katz
Wake County Facilities & Design
Wake Technical Community College
WakeMed Health and Hospitals
Walgreens
Wallace Plese + Dreher
Walnut Capital
Walter P Moore
Walton Street Capital, L.L.C.
Wampold Companies
Wanda Group
Wangard
Warburg Pincus
Warner Music Japan
WarnerMedia
Washington Headquarters Services
Washington Metropolitan Area Transit Authority
Washington Nationals Baseball Club
The Washington Post
Washington Real Estate Investment Trust
Waste Management
Waterfront Partnership
Waterfront Toronto
Waterman Interests
Waukeshaw Development Inc.
WB Wood
WCB Holdings, LLC
Weber Shandwick
Weichert Development Company
Weil, Gotshal & Manges LLP
Weiland Golden Goodrich
Weller Development
Wellmax Medical Centers
Wells Fargo
Welltower
Wendel Group
The Wendy's Company
Wenzhou Port Group
WePlay Music
West Ave Plastic Surgery Center
West Coast University
West Dallas Development
West Edge Developments Corp.
West Elm
West Virginia University
WestBridge Capital
Westchester Medical Plaza, LLC
Western Asset
Western Golf Association Evans Scholars Foundation
Western Kentucky University
Western Union
Westfield
Westinghouse Electric Company
Westjet
Westlake Chemical Corporation
Westmount
WestStar Bank
Westward Capital Group
Whale Rock Capital Management
Wharton Properties
Wheelock Street Capital
Whispering Pines Golf Club
White & Case
Whiting Petroleum Corporation
Whiting-Turner
Whole Foods Market
Wichita State University
Wildflower Ltd.
Willamette Light Brigade
William Blair

Willis Towers Watson
Willkie, Farr, & Gallagher LLP
WilmerHale
Wilson
Wilson Meany
Wilson Turner Kosmo LLP
Wind Creek Hospitality
WineDirect
Winn Family Office
Winston & Strawn LLP
Wintrust
Wipro Limited
Wiseburn Unified School District
WJE
WM Motor
Wolf Greenfield
Wolf Trap Foundation
Wolff Urban Development
Womble Carlyle
Wood Partners
Woodbine Development Corporation
Woodbine Entertainment Group
Woodborn Partners
The Woodlands Area Chamber of Commerce
The Woodlands Township
The Woodlands United Methodist Church
Woodmont Properties
Woodward Design+Build
Woolworths Group
Worcester Polytechnic Institute
Workday
Worth & Associates
Worthe Real Estate Group
WPP
WS Development
WSH Group
WSP Global Inc.
WTOP
Wuhan Changjiang New Town Administration Committee
Wunderkind
Wychmere Beach Club
Wyndham Destinations
Wyndham Hotels & Resorts

X
Xenia Hotels & Resorts
Xiang Lu Dragon Group
XiaoMi
XING
Xinjiang Times International Hotel Management
XL Construction
Xperience Fitness

Y
Y Film Production
Yale University
Yamagiwa
Yanmar
Yantai Development District City Planning Bureau
YMCA of the USA
YOFC
Yonex
Young Moore Attorneys
Youshow Intl Investment
YWCA Metropolitan Chicago

Z
Zappos.com
Zara USA
Zebra Technologies Corp
ZEISS
Zendesk
Zensho Holdings
Zhangjiang Pharma Engine
Zhonggeng Group
Zhonghai Real Estate Group
Ziegfeld Ballroom
Ziff Brothers Investments
Zillow Group
Zinc Real Estate
Zippo Manufacturing Company
Zumtobel Group

Gensler Team

Nick Bryan
Clay Kessack
Kaile Krauss
Sam Martin
Kendra Mayfield
Ngoc Ngo
Rika Putri

Contributors
Jessica Galeazzi
Adam Zurbruegg

Oversight
Andy Cohen
Diane Hoskins
Leslie Taylor

Image Credits

All images attributed to Gensler unless otherwise noted:

Dror Baldinger: pages 18–19
Devon Banks: page 23 bottom, page 78 left
Gensler/Bill Baxley: page 37 top
Benny Chan: pages 50–51
CreateAR Images: pages 28 top; 36; 84-85 main and inset
Studio Dror + Gensler: pages 68–69
Joe Fletcher: page 25
Tom Harris: pages 4–5; 9 second from bottom; 81 top
Mark Herboth: pages 9 top; 88
Highlite Images: page 57
Gensler/Makena Hudson: pages 34–35
Hufton + Crow: page 44–45
James John Jetel: page 78 top right
Hunter Kerhart: page 49 bottom
Courtesy of KHP Capital Partners: page 56 bottom
Eric Laignel: page 78 bottom right
David Lauer: pages 64–65
Gensler/Chris Leonard: page 23 top
Jessica Marcotte: pages 52–53
Halkin Mason: page 10
Jason O’Rear: pages 37 bottom; 40–41
Garrett Rowland: pages 7; 29
Jasper Sanidad: page 9 bottom

Printed by Hemlock Printers
www.hemlock.com

Principals

Chief Executive Officers
Andy Cohen, FAIA
Diane Hoskins, FAIA, IIDA, LEED AP

Board of Directors
John Adams, AIA, LEED AP
Robin Klehr Avia, FIIDA
Joseph Brancato, FAIA, NCARB
Andy Cohen, FAIA
Rocco Giannetti, FAIA, NCARB, LEED AP
Jordan Goldstein, FAIA, FIIDA, LEED AP
Diane Hoskins, FAIA, IIDA, LEED AP
Robert A. Jernigan, FAIA
Janet Pogue McLaurin, FIIDA, AIA, LEED AP
Judy Pesek, FIIDA, LEED AP
Ray Shick, AIA
Julia Simet, FIIDA, NCIDQ, LEED AP
Daniel W. Winey, FAIA, IIDA, LEED AP
Whitley Wood, IIDA, LEED AP

Founder
M. Arthur Gensler Jr., FAIA, FIIDA, RIBA

Abu Dhabi
José Fainé

Atlanta
Robert M. Fischel, AIA, LEED AP
Colin O’Brien
Kevin Songer, AIA, LEED AP, RDI, NCARB
Stephen Swicegood, FAIA, IIDA, LEED AP, NCARB

Austin
Jonathan Emmett
Kirk Funkhouser, AIA
Steve Hudson, CPA
David Kramer
David Lynch, AIA, RID, LEED AP
Edward A. Muth, AIA, IIDA
Judy Pesek, FIIDA, LEED AP
Todd Runkle
Luis Santi, NCIDQ, LEED AP

Baltimore
Ehren Gaag, AIA, LEED AP
Vaki Mawema, LEED AP
Peter Stubb, AIA, LEED AP

Bangalore
Sanjay Gulati
Smita Gupta, Assoc. AIA

Bangkok
David J. Calkins, FAIA, LEED AP

Beijing
Emma Chang, Assoc. AIA
Jerry Hung

Birmingham
Tariq Shaikh

Bogotá
Robin Klehr Avia, FIIDA
Joseph Brancato, FAIA, NCARB
Christian Wolff, RA, CAPBA

Boston
Todd A. Dundon, AIA
Alexander Fernández, AIA
J.F. Finn III, AIA, LEED AP
Kenneth I. Fisher, FAIA, LEED AP
Douglas C. Gensler, AIA
Fran Noval
Jeanne M. Nutt, IIDA
Arlyn Vogelmann

Charlotte
John W. Gaulden, AIA, LEED AP
Kathleen M. Jordan, AIA, CID, LEED AP
Whitley Wood, IIDA, LEED AP

Chicago
Todd Baisch, AIA, NCIDQ, LEED AP
David Broz, AIA, LEED AP
Andre Brumfield, Assoc. AIA
Robert Clough, FAIA, LEED AP
Kristen Conry, AIA, LEED AP
Eric Gannon, AIA, LEED AP
Anne Gibson, NCIDQ, LEED AP
Russell Gilchrist, AIA, RIBA, ARB
Randy Guillot, FAIA, LEED AP
Todd Heiser, IIDA
Helen Hopton, NCIDQ, LEED AP
Lena Kitson, NCIDQ, IIDA, LEED AP
H. Scot Latimer, FAIA ACHA
Wes LeBlanc
Jim Prendergast, FAIA, IIDA, LEED AP
Sheryl Schulze, NCIDQ, RID
Mark E. Spencer, AIA
Grant Uhler, FAIA, LEED AP
Brian Vitale, AIA, LEED AP
Benjy Ward, AIA, LEED AP
Meghan Webster, AIA, LEED Green Associate, NCARB
Aleksandar Sasha Zeljic, AIA, LEED AP, NCARB

Dallas
Ross Conway, AIA, LEED AP
Zach D. Edwards, AIA, LEED AP
Rick Ferrara, AIA, LEED AP
Lillian Giering, RID, IIDA

Christopher Goggín, IIDA, Assoc. AIA, LEED AP
Barry Hand, AIA, LEED AP
Tim Hudson, RA
Paul Manno, AIA, IIDA
Cindy W. Simpson, FIIDA, LEED AP
Deeg Snyder, AIA
Steven R. Upchurch, AIA
Cherrie Wysong, IIDA

Denver
Jon Gambrell, AIA, CDT, LEED AP
Michelle Liebling, IIDA, NCIDQ, LEED AP
Brent Mather, AIA, LEED AP

Detroit
William Hartman, FAIA, LEED AP
John Waller

Dubai
José Fainé

Firmwide
Christine Barber
Michael Bodziner, CID, LEED AP
Mark Brungo, AIA
Scott Dunlap, AIA LEED AP
Dian Duvall
Jordan Goldstein, FAIA, FIIDA, LEED AP
Linda Havard, MBA
Joseph Joseph
David Kramer
H. Scot Latimer, FAIA ACHA
Surendra Mathe
Janet Pogue McLaurin, FIIDA, AIA, LEED AP
Hans Neubert
Janine Pesci
Philippe Phaneuf, Esq.
Joan Price
Ray Shick, AIA
Amy Skaggs, Esq.
Rives T. Taylor, FAIA, LEED AP
Allison Brooke Tomlinson, Esq.
Daniel W. Winey, FAIA, IIDA, LEED AP

Hong Kong
Carlos Gerhard, CAM-SAM, LEED GA

Houston
Jerry Alexander, AIGA, SEG
Stephanie Burritt, RID, NCIDQ
Hunter Clayton, LEED AP
Alan B. Colyer
Brooks W. Howell, AIA
John C. Haba, AIA
Johnny Kousparis, AIA, IIDA, LEED AP
Peter Merwin, AIA
Raffael Scasserra
Dean Strombom, FAIA, LEED AP
Kristopher M. Stuart, AIA, LEED AP
Rives T. Taylor, FAIA, LEED AP
Timothy T. Q. Vuong, AIA, RID, LEED AP

La Crosse
Joan Meyers

Las Vegas
John Adams, AIA, LEED AP

London
Collin Burry, FIIDA, NCIDQ, LEED AP
Jane Clay
Athely Guedes
Richard Harrison, RIBA, ARB
Lara M. Marrero
Ian Mulcahey
Lukasz Platkowski, ARB
Carlos Posada, IIDA, LEED AP
Valeria Segovia, ARB
Julia Simet, FIIDA, NCIDQ, LEED AP
Duncan Swinhoe, RIBA
Fergal Walsh

Los Angeles
John Adams, AIA, LEED AP
Peter Barsuk, AIA, DBIA, LEED AP
Aaron Birney, AIA, LEED AP
Elizabeth Brink, Assoc. AIA, EDAC, LEED AP
Mark Brungo, AIA
John Circenis, AIA
Christopher Coldoff, IIDA, CID, LEED AP
Barbara Dunn, FIIDA, CID, FCOLPM
David Glover
Arpy Hatzkian
David Herjeczki, AIA, LEED AP
Thomas S. Ito, FAIA, LEED AP
Robert A. Jernigan, FAIA
James Kelly, AIA, LEED AP
Nathan Kim, AIA, LEED AP
Stephanie Koenig, Assoc. AIA
Irwin Miller, Assoc. AIA
Lee Pasteris, NCIDQ
Duncan Paterson
Annmarie Plenge, Assoc. AIA, IIDA, NCIDQ
Kevin Rosenstein
Deborah Shepley, AIA, LEED AP
Olivier R. Sommerhalder, AIA
Eric Stultz, AIA, LEED AP
Thomas A. Sze, AIA
Keith Thompson, AIA, LEED AP
Ronald F. Turner, FAIA, LEED AP
Michael Volk, AIA, NCARB
Gene Watanabe, AIA, LEED AP

Li Wen, AIA
Michael White, AIA
Warwick Ian Wicksman, AIA
Guy Williams, AIA
Jill Wittnebel
Alan Young, AIA, LEED AP
Terence Young, AIA, LEED AP
Denise Zacky-Popoch, AIA, LEED AP

Mexico City
George Miller-Ramos, LEED AP

Miami
Shamim Ahmadzadegan, AIA, LEED AP
Diana Farmer-Gonzalez, Assoc. AIA, IIDA
Walter Trujillo, LEED AP
Carlos Valera, AIA, NCARB, NCIDQ, LEED AP

Minneapolis
Bill Baxley, AIA

Morristown
Steven Bitterman, AIA, NCARB
Reid Brockmeier, AIA
Dana Nalbantian, Assoc. AIA
Brenda Nyce-Taylor, IIDA, NCIDQ, LEED AP

Munich
Philip Tidd

New York
Lauren Adams
Ambrose Aliaga-Kelly, AIA
Jean Anderson, IIDA, NCIDQ
Robin Klehr Avia, FIIDA
Brian Berry, AIA, LEED AP
Joseph Brancato, FAIA, NCARB
John Box Bricker
Brian Brindisi
Timothy Bromiley, AIA, LEED AP
Islay Burgess
Maddy Burke-Vigeland, FAIA, LEED AP
Becky Button, CID, IIDA, LEED AP
Amanda Carroll, CID, IIDA, LEED AP
Michael Chappell
James Crispino, AIA, NCARB
Kathy A. Diamond
Sonya Dufner, FASID, NCIDQ
David W. Epstein, AIA, NCARB, LEED AP
Robert Fuller, AIA
Andrew Garnar-Wortzel
Michael Gatti, AIA, NCARB
Rocco Giannetti, FAIA, NCARB, LEED AP
Jan L. Gross, AIA, NCARB
Leslie J. Jabs, AIA
Matthew Johnson, AIA, LEED AP
Joshua Katz, AIA
Thomas R. Krizmanic, AIA
Thomas A. Lanzelotti, AIA, CSI
Joseph Lauro, AIA, LEED AP
EJ Lee, IIDA, LEED AP
Laurent Lisimachio, IIDA, DESA, LEED AP
Kenneth Lunstead, AIA
Carlos M. Martínez, AIA, FIIDA, LEED AP
Tom McGoldrick, AIA, CDT, NCARB, LEED AP
Mark Morton, IIDA
John Mulling, IIDA, CID
Molly Murphy, Assoc. AIA, LEED AP
Paul Murphy, CPA
Hans Neubert
Beth Novitsky
Amanda Ramos
Johnathan Sandler
Oliver Schaper, Assoc. AIA, CDT, LEED AP
Stefanie Shunk, IIDA, NCIDQ
Karen Solomon, AIA, CDT
Peter Wang, AIA, NCARB, LEED AP
Edward Wood, IIDA

Shanghai
Edward I. Chao
Joe Fan, ARB, Green Star AP D+AB
Xiaomei Lee, LEED AP
Jennifer Liu, LEED AP
Freck Qin, LEED AP
Amber Sun
Hasan Syed, GBICA, GMRAlA

Singapore
David J. Calkins, AIA, LEED AP
Haiwen Luo, FCCA, CICPA
Nayan Parekh
Angela Spathonis

Sydney
Tom Owens, ARB, RA, AIA, NCARB

Tampa
Dawn Gunter, AIA, NCARB
Bert Oliva, IIDA

Tokyo
Daichi Amano, LEED AP, RA
Sarah Bader, IIDA, EDAC, CID, NCIDQ
Chie Matsushita, 1st CI. RA, LEED AP

Toronto
Annie Bergeron, ARIDO, LEED AP
Filo Costa, ARIDO, LEED AP
Eric Ginsburg
Steven Paynter, OAA, ARB

Washington, D.C.
Sumita Arora, RIBA, LEED GA
Kenneth P. Baker, FIIDA, Assoc. AIA, Assoc. RIBA, Assoc. ASID
Jeff Barber, AIA, LEED AP
Mariela Buendia-Corrochano, IIDA, NCIDQ, LEED AP

Carlos A. Cubillos, SCA, LEED GA
Tama Duffy Day, FACHE, FIIDA, FASID, LEED AP
Laura DeBonis, AIA, LEED AP
Donald Ghent, AIA, CSI, LEED AP
Jill Goebel, IIDA, LEED AP
Francisco Gonzalez, NCIDQ, LEED AP
Kate Kirkpatrick, LEED GA
Jared Krieger, AIA, LEED AP
Duncan Lyons, LEED AP
John McKinney, NCIDQ, LEED AP
Janet Pogue McLaurin, FIIDA, AIA, LEED AP
Ty Osbaugh, AIA, LEED AP
Robert A. Peck, Hon. AIA, Hon. ASLA
Dee Rendleman, CPA
Nestor Santa-Cruz, IIDA, LEED AP
Theresa Sheils, AIA, LEED AP
Tom Shen, Assoc. AIA, LEED AP
Ryan Sickman, LEED AP
Kimberly Sullivan, NCIDQ, LEED AP
Timothy Taylor, AIA

John Thomann, AIA, CID, LEED AP
James Williamson, FIIDA, LEED AP

San Antonio
Todd Runkle

San Diego
Stacy Cannon, AIA
Darrel Fullbright, AIA, LEED AP
Tom Heffernan, AIA, LEED AP
J. Kevin Heinly, AIA, LEED AP

San Francisco
Michael Bodziner, CID, LEED AP
Barry Bourbon, AIA, LEED AP
Cathy Bregenzer, AIA, LEED AP
Janice Cavaliere
Lisa Cholmondeley, AIA, LEED AP, CDT, NOMA
Scott Dunlap, AIA, LEED AP
Ryan Fетters, RA, LEED AP
Randy Howder, AIA, IIDA, LEED AP
Hao Ko, AIA, LEED AP
Kirsten Ritchie, PE, LEED AP
Clark Sept, RA
Tony Thornton, RIBA
Gervais Tompkin, AIA, LEED AP
Benedict Tranel, AIA, LEED AP
Douglas Zucker, AIA, IIDA, LEED AP

San Jose
Antonio Caliz, RA
Natalie Engels, IIDA, LEED AP
Christine Laing, AIA, LEED AP
Peter Weingarten, AIA, LEED AP
Matin Zargari

San José (Costa Rica)
Samuel Bermúdez, RA
Christine Durman, RA
Jessica García, RA, LEED AP
Tom Lindblom, AIA
Christian Wolff, RA, CAPBA

São Paulo
Robin Klehr Avia, FIIDA
Joseph Brancato, AIA
Christian Wolff, RA, CAPBA

Gensler

GUIDING PRINCIPLES

Great companies have strong, clear values and the discipline to stay true to them despite constantly changing market conditions and business cycles. We are committed to protecting and nurturing our extraordinary culture and the guiding principles that are its foundation.

We believe strongly in the power of our people and their innovative diversity to create a better world.

Grow and empower the industry's top talent to pursue their passions and make a difference.

We can't be global if we are not local first.

Practice area specialization differentiates us as experts; our diversity of thinking, talents, and experiences ignites our innovation.

We're proud to be in the business of design. Each of us is responsible for our success.

We believe it all begins and ends with our client relationships.

We are obsessively curious—we bring diverse teams together to learn, grow, and explore new ideas.

Embrace a diversity of projects—large and small, ambitious and modest—that no other firm can.

Growing our firm provides opportunity for each person to reach their full potential.

We care deeply about our “we vs. I” family culture. Together, we are one firm with a shared destiny.